

## Product datasheet for **AP53291PU-N**

### Phostensin (PPP1R18) (N-term) Rabbit Polyclonal Antibody

#### Product data:

Product Type:	Primary Antibodies
Applications:	FC, IHC, WB
Recommended Dilution:	<b>Flow cytometry:</b> 1/10-1/50. <b>Immunohistochemistry on Paraffin sections:</b> 1/50-1/100. <b>Western blot:</b> 1/100-1/500. Enzyme immunoassay: 1/1000.
Reactivity:	Human
Host:	Rabbit
Isotype:	Ig
Clonality:	Polyclonal
Immunogen:	Synthetic peptide - KLH conjugated - corresponding to the N-terminal region (between 199-228aa) of human PHTNS.
Specificity:	This antibody recognize PHTNS at N-terms.
Formulation:	PBS with 0.09% (W/V) Sodium azide State: Aff - Purified State: Liquid purified Ig fraction
Concentration:	lot specific
Purification:	Purified through a Protein A column followed by peptide affinity purification
Conjugation:	Unconjugated
Storage:	Store undiluted at 2-8°C for one month or (in aliquots) at -20°C for longer. Avoid repeated freezing and thawing.
Stability:	Shelf life: one year from despatch.
Gene Name:	protein phosphatase 1 regulatory subunit 18
Database Link:	<a href="#">Entrez Gene 170954 Human</a> <a href="#">Q6NYC8</a>
Background:	PHTNS interacts with regulatory subunits that target the enzyme to different cellular locations and change its activity toward specific substrates. Phostensin is a regulatory subunit that targets PP1 to F-actin cytoskeleton□

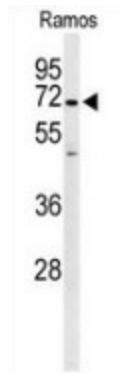


[View online »](#)

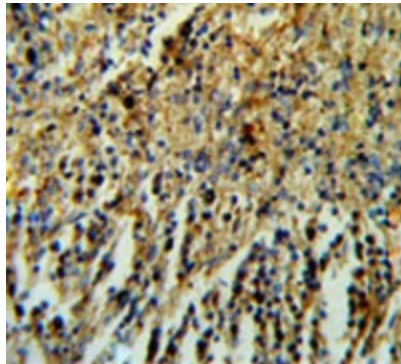
**Synonyms:** HKMT1098, KIAA1949

**Note:** **Molecular Weight:** 67943 Da

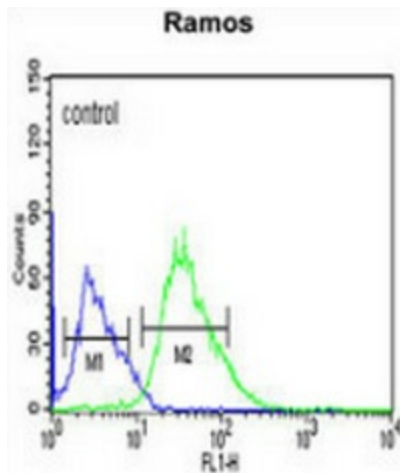
**Product images:**



Western blot analysis of PHTNS (arrow) in Ramos cell line lysates (35ug/lane) using PHTNS antibody. (N-term).



Immunohistochemistry analysis in human spleen tissue (Formalin-fixed, Paraffin-embedded) using PHTNS antibody. (N-term), followed by peroxidase conjugation of the secondary antibody and DAB staining. This data demonstrates the use of the PHTNS antibody for IHC. Clinical relevance has not been evaluated.



Flow cytometric analysis of Ramos cells (right histogram) compared to a negative control cell (left histogram) using PHTNS antibody., followed by FITC-conjugated goat-anti-rabbit secondary antibodies.