

Product datasheet for **AP53290PU-N**

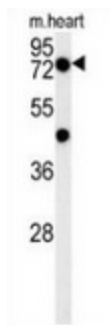
PHTF2 (Center) Rabbit Polyclonal Antibody

Product data:

Product Type:	Primary Antibodies
Applications:	WB
Recommended Dilution:	Western blot: 1/100-1/500. Enzyme immunoassay: 1/1000.
Reactivity:	Human, Mouse
Host:	Rabbit
Isotype:	Ig
Clonality:	Polyclonal
Immunogen:	Synthetic peptide - KLH conjugated - corresponding to the central region (between 388-418aa) of human PHTF2.
Specificity:	This antibody recognizes PHTF2.
Formulation:	PBS with 0.09% (W/V) Sodium azide State: Aff - Purified State: Liquid purified Ig fraction
Concentration:	lot specific
Purification:	Purified through a Protein A column followed by peptide affinity purification
Conjugation:	Unconjugated
Storage:	Store undiluted at 2-8°C for one month or (in aliquots) at -20°C for longer. Avoid repeated freezing and thawing.
Stability:	Shelf life: one year from despatch.
Gene Name:	putative homeodomain transcription factor 2
Database Link:	Entrez Gene 57157 Human Q8N3S3
Synonyms:	DKFZp434D166; DKFZp564F013; FLJ33324; MGC86999; OTTHUMP00000208231
Note:	Molecular Weight: 88757 Da
Protein Families:	Transcription Factors, Transmembrane



[View online »](#)

Product images:

Western blot analysis in mouse heart tissue lysates (15ug/lane) using PHTF2 antibody. This demonstrates the PHTF2 antibody detected PHTF2 protein (arrow).