

## Product datasheet for **AP53283PU-N**

### PHF21A (Center) Rabbit Polyclonal Antibody

#### Product data:

Product Type:	Primary Antibodies
Applications:	WB
Recommended Dilution:	<b>ELISA:</b> 1/1000. <b>Western Blot:</b> 1/100-1/500.
Reactivity:	Human
Host:	Rabbit
Isotype:	Ig
Clonality:	Polyclonal
Immunogen:	KLH conjugated synthetic peptide between 435-464 amino acids from the Central region of human PHF21A
Specificity:	This antibody recognizes Human PHF21A (Center).
Formulation:	PBS containing 0.09% (W/V) Sodium Azide as preservative State: Aff - Purified State: Liquid purified Ig fraction
Concentration:	lot specific
Purification:	Protein A column, followed by peptide affinity purification
Conjugation:	Unconjugated
Storage:	Store undiluted at 2-8°C for one month or (in aliquots) at -20°C for longer. Avoid repeated freezing and thawing.
Stability:	Shelf life: one year from despatch.
Gene Name:	PHD finger protein 21A
Database Link:	<a href="#">Entrez Gene 51317 Human Q96BD5</a>
Background:	The PHF21A gene encodes BHC80, a component of a BRAF35 (MIM 605535)/histone deacetylase (HDAC; see MIM 601241) complex (BHC) that mediates repression of neuron-specific genes through the cis-regulatory element known as repressor element-1 (RE1) or neural restrictive silencer (NRS) (Hakimi et al., 2002 [PubMed 12032298]).
Synonyms:	PHD finger protein 21A, BHC80a, BHC80, KIAA1696, BM-006

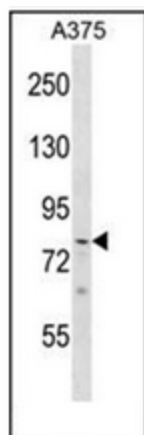


[View online »](#)

Note: **Molecular Weight:** 74854 Da

Protein Families: Druggable Genome, Transcription Factors

**Product images:**



Western blot analysis of PHF21A Antibody (Center) in A375 cell line lysates (35ug/lane). This demonstrates the PHF21A antibody detected the PHF21A protein (arrow)