

Product datasheet for **AP53282PU-N**

PHF20 (N-term) Rabbit Polyclonal Antibody

Product data:

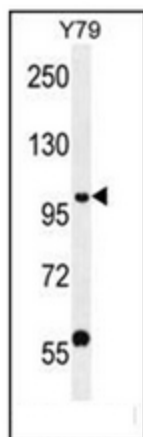
Product Type:	Primary Antibodies
Applications:	IHC, WB
Recommended Dilution:	ELISA: 1/1000. Western Blot: 1/100-1/500. Immunohistochemistry on Paraffin Sections: 1/10-1/50.
Reactivity:	Human
Host:	Rabbit
Isotype:	Ig
Clonality:	Polyclonal
Immunogen:	KLH conjugated synthetic peptide between 130-159 amino acids from the N-terminal region of human PHF20
Specificity:	This antibody recognizes Human PHF20 (N-term).
Formulation:	PBS containing 0.09% (W/V) Sodium Azide as preservative State: Aff - Purified State: Liquid purified Ig fraction
Concentration:	lot specific
Purification:	Protein A column, followed by peptide affinity purification
Conjugation:	Unconjugated
Storage:	Store undiluted at 2-8°C for one month or (in aliquots) at -20°C for longer. Avoid repeated freezing and thawing.
Stability:	Shelf life: one year from despatch.
Gene Name:	PHD finger protein 20
Database Link:	Entrez Gene 51230 Human Q9BVIQ
Background:	PHF20 is possible a transcription factor.
Synonyms:	PHD finger protein 20, Glioma-expressed antigen 2, GLEA2, HCA58, NZF, TZP, C20orf104
Note:	Molecular Weight: 115386 Da



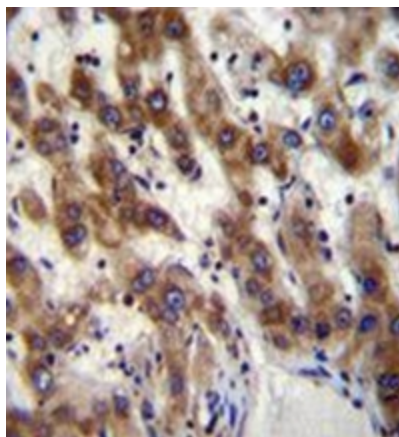
[View online »](#)

Protein Families: Druggable Genome, Transcription Factors

Product images:



Western blot analysis of PHF20 Antibody (N-term) in Y79 cell line lysates (35ug/lane). This demonstrates the PHF20 antibody detected the PHF20 protein (arrow).



Immunohistochemistry analysis in formalin fixed and paraffin embedded human liver tissue reacted with PHF20 Antibody (N-term), which was peroxidase conjugated to the secondary antibody and followed by DAB staining. This data demonstrates the use of PHF20 Antibody (N-term) for immunohistochemistry. Clinical relevance has not been evaluated.