

## Product datasheet for **AP53281PU-N**

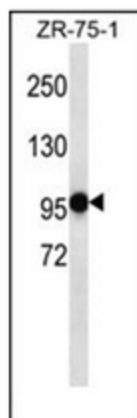
### PHF14 (N-term) Rabbit Polyclonal Antibody

#### Product data:

Product Type:	Primary Antibodies
Applications:	WB
Recommended Dilution:	<b>ELISA:</b> 1/1000. <b>Western Blot:</b> 1/100-1/500.
Reactivity:	Human
Host:	Rabbit
Isotype:	Ig
Clonality:	Polyclonal
Immunogen:	KLH conjugated synthetic peptide between 230-260 amino acids from the N-terminal region of human PHF14
Specificity:	This antibody recognizes Human PHF14 (N-term).
Formulation:	PBS containing 0.09% (W/V) Sodium Azide as preservative State: Aff - Purified State: Liquid purified Ig fraction
Concentration:	lot specific
Purification:	Protein A column, followed by peptide affinity purification
Conjugation:	Unconjugated
Storage:	Store undiluted at 2-8°C for one month or (in aliquots) at -20°C for longer. Avoid repeated freezing and thawing.
Stability:	Shelf life: one year from despatch.
Gene Name:	PHD finger protein 14
Database Link:	<a href="#">Entrez Gene 9678 Human O94880</a>
Synonyms:	PHD finger protein 14, KIAA0783
Note:	<b>Molecular Weight:</b> 100053 Da
Protein Families:	Druggable Genome, Transcription Factors



[View online »](#)

**Product images:**

Western blot analysis of PHF14 Antibody (N-term) in ZR-75-1 cell line lysates (35ug/lane). This demonstrates the PHF14 antibody detected the PHF14 protein (arrow).