

Product datasheet for **AP53276PU-N**

PHACTR4 (C-term) Rabbit Polyclonal Antibody

Product data:

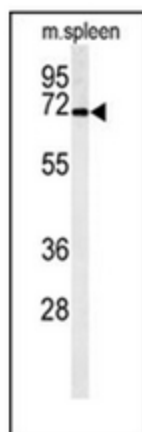
Product Type:	Primary Antibodies
Applications:	WB
Recommended Dilution:	ELISA: 1/1000. Western Blot: 1/1000
Reactivity:	Human, Mouse
Host:	Rabbit
Isotype:	Ig
Clonality:	Polyclonal
Immunogen:	KLH conjugated synthetic peptide between 536~565 amino acids from the C-terminal region of human PHCTAR4
Specificity:	This antibody recognizes Human and Mouse PHACTRA (C-term).
Formulation:	PBS containing 0.09% (W/V) Sodium Azide as preservative State: Aff - Purified State: Liquid purified Ig fraction
Concentration:	lot specific
Purification:	Protein A column, followed by peptide affinity purification
Conjugation:	Unconjugated
Storage:	Store undiluted at 2-8°C for one month or (in aliquots) at -20°C for longer. Avoid repeated freezing and thawing.
Stability:	Shelf life: one year from despatch.
Gene Name:	phosphatase and actin regulator 4
Database Link:	Entrez Gene 100169 Mouse Entrez Gene 65979 Human Q8IZ21
Background:	This gene encodes a member of the phosphatase and actin regulator (PHACTR) family. Other PHACTR family members have been shown to inhibit protein phosphatase 1 (PP1) activity, and the homolog of this gene in the mouse has been shown to interact with actin and PP1. Multiple transcript variants encoding different isoforms have been found for this gene.
Synonyms:	PRO2963



[View online »](#)

Note: **Molecular Weight:** 78211 Da

Product images:



Western blot analysis of PHACTR4 Antibody (C-term) in mouse spleen tissue lysates (35ug/lane). PHACTR4 (arrow) was detected using the purified Pab.