

Product datasheet for **AP53274PU-N**

PGRMC2 (C-term) Rabbit Polyclonal Antibody

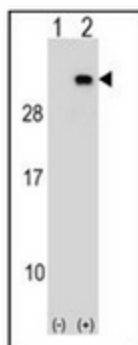
Product data:

Product Type:	Primary Antibodies
Applications:	WB
Recommended Dilution:	ELISA: 1/1000. Western Blot: 1/100-1/500.
Reactivity:	Human
Host:	Rabbit
Isotype:	Ig
Clonality:	Polyclonal
Immunogen:	KLH conjugated synthetic peptide between 191-221 amino acids from the C-terminal region of human PGRMC2
Specificity:	This antibody recognizes Human PGRMC2 (C-term).
Formulation:	PBS containing 0.09% (W/V) Sodium Azide as preservative State: Aff - Purified State: Liquid purified Ig fraction
Concentration:	lot specific
Purification:	Protein A column, followed by peptide affinity purification
Conjugation:	Unconjugated
Storage:	Store undiluted at 2-8°C for one month or (in aliquots) at -20°C for longer. Avoid repeated freezing and thawing.
Stability:	Shelf life: one year from despatch.
Gene Name:	progesterone receptor membrane component 2
Database Link:	Entrez Gene 10424 Human O15173
Background:	PGRMC2 is receptor for steroids (Potential).
Synonyms:	Steroid receptor DG6, PMBP, Progesterone membrane-binding protein
Note:	Molecular Weight: 23818 Da

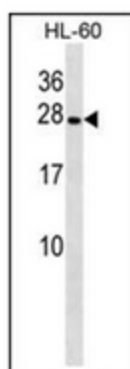


[View online »](#)

Product images:



Western blot analysis of PGRMC2 (arrow) using PGRMC2 Antibody (C-term). 293 cell lysates (2 ug/lane) either nontransfected (Lane 1) or transiently transfected (Lane 2) with the PGRMC2 gene.



Western blot analysis of PGRMC2 Antibody (C-term) in HL-60 cell line lysates (35ug/lane). This demonstrates the PGRMC2 antibody detected the PGRMC2 protein (arrow).