

Product datasheet for **AP53272PU-N**

PGPEP1 (N-term) Rabbit Polyclonal Antibody

Product data:

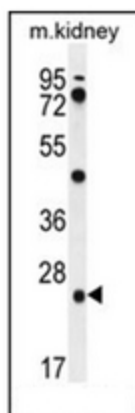
Product Type:	Primary Antibodies
Applications:	WB
Recommended Dilution:	ELISA: 1/1000. Western Blot: 1/100-1/500.
Reactivity:	Human, Mouse
Host:	Rabbit
Isotype:	Ig
Clonality:	Polyclonal
Immunogen:	KLH conjugated synthetic peptide between 29-59 amino acids from the N-terminal region of human PGPEP1
Specificity:	This antibody recognizes Human and Mouse PGPEP1 (N-term).
Formulation:	PBS containing 0.09% (W/V) Sodium Azide as preservative State: Aff - Purified State: Liquid purified Ig fraction
Concentration:	lot specific
Purification:	Protein A column, followed by peptide affinity purification
Conjugation:	Unconjugated
Storage:	Store undiluted at 2-8°C for one month or (in aliquots) at -20°C for longer. Avoid repeated freezing and thawing.
Stability:	Shelf life: one year from despatch.
Gene Name:	pyroglutamyl-peptidase I
Database Link:	Entrez Gene 66522 Mouse Entrez Gene 54858 Human Q9NXJ5
Background:	Pyroglutamyl peptidase I (EC 3.4.19.3) catalyzes the hydrolysis of N-terminal pyroglutamyl residues from oligopeptides and proteins.
Synonyms:	Pyroglutamyl-peptidase 1, PAP-I, PGP-I, PGPI
Note:	Molecular Weight: 23138 Da



[View online »](#)

Protein Families: Druggable Genome, Protease

Product images:



Western blot analysis of PGPEP1 Antibody (N-term) in mouse kidney tissue lysates (35ug/lane). This demonstrates the PGPEP1 antibody detected the PGPEP1 protein (arrow).