

Product datasheet for **AP53266PU-N**

PGA3 (N-term) Rabbit Polyclonal Antibody

Product data:

Product Type:	Primary Antibodies
Applications:	WB
Recommended Dilution:	ELISA: 1/1000. Western Blot: 1/100-1/500.
Reactivity:	Human
Host:	Rabbit
Isotype:	Ig
Clonality:	Polyclonal
Immunogen:	KLH conjugated synthetic peptide between 44-73 amino acids from the N-terminal region of Human Pepsin
Specificity:	This antibody recognizes Human Pepsin (N-term).
Formulation:	PBS containing 0.09% (W/V) Sodium Azide as preservative State: Aff - Purified State: Liquid purified Ig fraction
Concentration:	lot specific
Purification:	Protein A column, followed by peptide affinity purification
Conjugation:	Unconjugated
Storage:	Store undiluted at 2-8°C for one month or (in aliquots) at -20°C for longer. Avoid repeated freezing and thawing.
Stability:	Shelf life: one year from despatch.
Gene Name:	pepsinogen 3, group I (pepsinogen A)
Database Link:	Entrez Gene 643847 Human Entrez Gene 643834 Human P0DJD8
Background:	PGA3 shows particularly broad specificity; although bonds involving phenylalanine and leucine are preferred, many others are also cleaved to some extent.
Synonyms:	Pepsin A, PGA, pepsinogen 3 group I, pepsinogen 4 group I, pepsinogen 5 group I, Pepsinogen A, PGA3, PGA4, PGA5



[View online »](#)

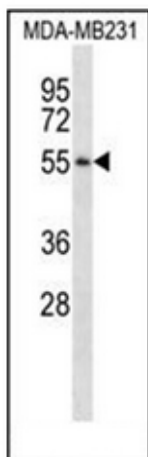
Note: **Molecular Weight:** 41977 Da

Protocol:



Protein Families: Druggable Genome

Product images:



Western blot analysis of Pepsin Antibody (N-term) in MDA-MB231 cell line lysates (35ug/lane). This demonstrates the PGA3 antibody detected the PGA3 protein (arrow).