

Product datasheet for **AP53264PU-N**

Profilin 2 (PFN2) (C-term) Rabbit Polyclonal Antibody

Product data:

Product Type:	Primary Antibodies
Applications:	WB
Recommended Dilution:	ELISA: 1/1000. Western Blot: 1/100-1/500.
Reactivity:	Human
Host:	Rabbit
Isotype:	Ig
Clonality:	Polyclonal
Immunogen:	KLH conjugated synthetic peptide between 109-139 amino acids from the C-terminal region of Human Profilin 2 (PFN2)
Specificity:	This antibody recognizes Human Profilin-2 / PFN2 (C-term).
Formulation:	PBS containing 0.09% (W/V) Sodium Azide as preservative State: Aff - Purified State: Liquid purified Ig fraction
Concentration:	lot specific
Purification:	Protein A column, followed by peptide affinity purification
Conjugation:	Unconjugated
Storage:	Store undiluted at 2-8°C for one month or (in aliquots) at -20°C for longer. Avoid repeated freezing and thawing.
Stability:	Shelf life: one year from despatch.
Gene Name:	profilin 2
Database Link:	Entrez Gene 5217 Human P35080
Background:	The protein encoded by this gene is a ubiquitous actin monomer-binding protein belonging to the profilin family. It is thought to regulate actin polymerization in response to extracellular signals. There are two alternatively spliced transcript variants encoding different isoforms described for this gene
Synonyms:	Profilin-2, Profilin II



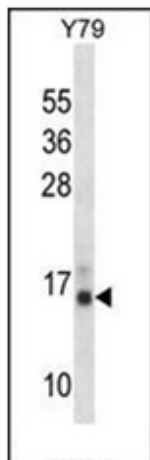
[View online »](#)

Note: **Molecular Weight:** 15046 Da

Protein Families: Druggable Genome

Protein Pathways: Regulation of actin cytoskeleton

Product images:



Western blot analysis of PFN2 Antibody (C-term) in Y79 cell line lysates (35ug/lane). This demonstrates the PFN2 antibody detected the PFN2 protein (arrow).