

## Product datasheet for **AP53257PU-N**

### PER1 (C-term) Rabbit Polyclonal Antibody

#### Product data:

Product Type:	Primary Antibodies
Applications:	WB
Recommended Dilution:	<b>ELISA:</b> 1/1000. <b>Western Blot:</b> 1/100-1/500.
Reactivity:	Human
Host:	Rabbit
Isotype:	Ig
Clonality:	Polyclonal
Immunogen:	KLH conjugated synthetic peptide between 1155-1183 amino acids from the C-terminal region of human PER1
Specificity:	This antibody recognizes Human PER1 (C-term).
Formulation:	PBS containing 0.09% (W/V) Sodium Azide as preservative State: Aff - Purified State: Liquid purified Ig fraction
Concentration:	lot specific
Purification:	Protein A column, followed by peptide affinity purification
Conjugation:	Unconjugated
Storage:	Store undiluted at 2-8°C for one month or (in aliquots) at -20°C for longer. Avoid repeated freezing and thawing.
Stability:	Shelf life: one year from despatch.
Gene Name:	period circadian clock 1
Database Link:	<a href="#">Entrez Gene 5187 Human O15534</a>



[View online »](#)

**Background:**

This gene is a member of the Period family of genes and is expressed in a circadian pattern in the suprachiasmatic nucleus, the primary circadian pacemaker in the mammalian brain. Genes in this family encode components of the circadian rhythms of locomotor activity, metabolism, and behavior. Circadian expression in the suprachiasmatic nucleus continues in constant darkness, and a shift in the light/dark cycle evokes a proportional shift of gene expression in the suprachiasmatic nucleus. The specific function of this gene is not yet known. Alternative splicing has been observed in this gene; however, these variants have not been fully described.

**Synonyms:**

Period circadian protein homolog 1, hPER, Circadian clock protein PERIOD 1, PER, RIGUI, KIAA0482

**Note:**

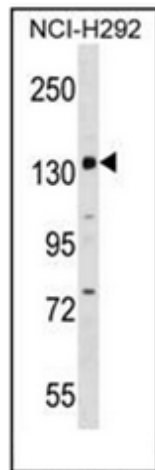
**Molecular Weight:** 136212 Da

**Protein Families:**

Druggable Genome

**Protein Pathways:**

Circadian rhythm - mammal

**Product images:**

Western blot analysis of PER1 Antibody (C-term) in NCI-H292 cell line lysates (35ug/lane). This demonstrates the PER1 antibody detected the PER1 protein (arrow).