

Product datasheet for **AP53256PU-N**

PELP1 (Center) Rabbit Polyclonal Antibody

Product data:

Product Type:	Primary Antibodies
Applications:	IHC, WB
Recommended Dilution:	ELISA: 1/1000. Western Blot: 1/100-1/500. Immunohistochemistry on Paraffin Sections: 1/50-1/100.
Reactivity:	Human, Mouse
Host:	Rabbit
Isotype:	Ig
Clonality:	Polyclonal
Immunogen:	KLH conjugated synthetic peptide between 751-779 amino acids from the Central region of Human PELP1.
Specificity:	This antibody recognizes Mouse and Human PELP1 (Center).
Formulation:	PBS State: Aff - Purified State: Liquid purified Ig fraction Preservative: 0.09% Sodium Azide
Concentration:	lot specific
Purification:	Affinity Chromatography on Protein A
Conjugation:	Unconjugated
Storage:	Store undiluted at 2-8°C for one month or (in aliquots) at -20°C for longer. Avoid repeated freezing and thawing.
Stability:	Shelf life: one year from despatch.
Gene Name:	proline, glutamate and leucine rich protein 1
Database Link:	Entrez Gene 75273 Mouse Entrez Gene 27043 Human Q8IZL8
Background:	PELP1 is a coactivator of estrogen receptor (see ESR1; MIM 133430)-mediated transcription and a corepressor of other nuclear hormone receptors and sequence-specific transcription factors (Choi et al., 2004 [PubMed 15456770]).



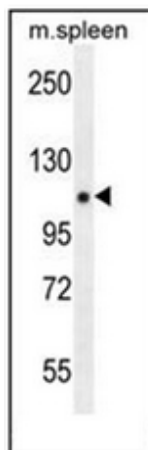
[View online »](#)

Synonyms: Transcription factor HMX3, PELP1, HMX3

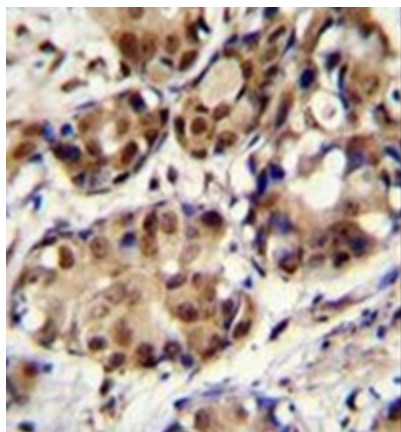
Note: **Molecular Weight:** 119700 Da

Protein Families: Druggable Genome, Stem cell - Pluripotency

Product images:



Western blot analysis of PELP1 Antibody (Center) in Mouse spleen tissue lysates (35ug/lane). This demonstrates the PELP1 antibody detected the PELP1 protein (arrow).



Formalin fixed and paraffin embedded human breast carcinoma stained with PELP1 Antibody (Center) followed by peroxidase conjugation of the secondary antibody and DAB staining.