

Product datasheet for **AP53251PU-N**

PEAR1 (C-term) Rabbit Polyclonal Antibody

Product data:

Product Type:	Primary Antibodies
Applications:	IHC, WB
Recommended Dilution:	ELISA: 1/1000. Western Blot: 1/100-1/500. Immunohistochemistry on Paraffin Sections: 1/50-1/100.
Reactivity:	Human
Host:	Rabbit
Isotype:	Ig
Clonality:	Polyclonal
Immunogen:	KLH conjugated synthetic peptide between 968-998 amino acids from the C-terminal region of human PEAR1
Specificity:	This antibody recognizes Human PEAR1 (C-term).
Formulation:	PBS containing 0.09% (W/V) Sodium Azide as preservative State: Aff - Purified State: Liquid purified Ig fraction
Concentration:	lot specific
Purification:	Protein A column, followed by peptide affinity purification
Conjugation:	Unconjugated
Storage:	Store undiluted at 2-8°C for one month or (in aliquots) at -20°C for longer. Avoid repeated freezing and thawing.
Stability:	Shelf life: one year from despatch.
Gene Name:	platelet endothelial aggregation receptor 1
Database Link:	Entrez Gene 375033 Human Q5VY43
Background:	PEAR1 is a platelet receptor that signals upon the formation of platelet-platelet contacts independent of platelet activation and secondary to platelet aggregation (Nanda et al., 2005 [PubMed 15851471]).
Synonyms:	MEGF12

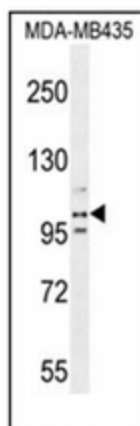


[View online »](#)

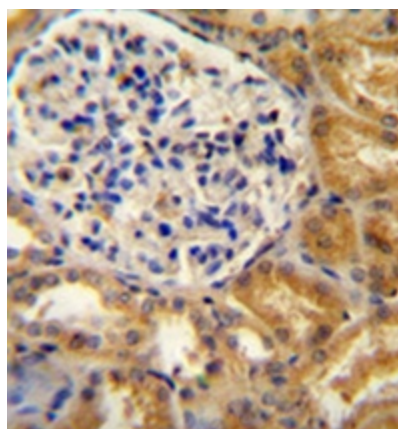
Note: **Molecular Weight:** 110666 Da

Protein Families: Transmembrane

Product images:



Western blot analysis of PEAR1 Antibody (C-term) in MDA-MB435 cell line lysates (35ug/lane). This demonstrates the PEAR1 antibody detected the PEAR1 protein (arrow).



Immunohistochemistry analysis in formalin fixed and paraffin embedded human kidney tissue reacted with PEAR1 Antibody (C-term), which was peroxidase conjugated to the secondary antibody and followed by DAB staining. This data demonstrates the use of the PEAR1 antibody (C-term) for immunohistochemistry. Clinical relevance has not been evaluated.