

## Product datasheet for **AP53248PU-N**

### SCC112 (PDS5A) (C-term) Rabbit Polyclonal Antibody

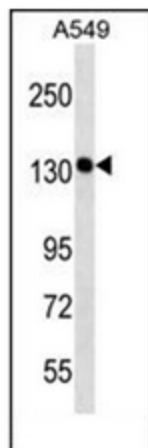
#### Product data:

Product Type:	Primary Antibodies
Applications:	WB
Recommended Dilution:	<b>ELISA:</b> 1/1000. <b>Western Blot:</b> 1/100-1/500.
Reactivity:	Human
Host:	Rabbit
Isotype:	Ig
Clonality:	Polyclonal
Immunogen:	KLH conjugated synthetic peptide between 1308-1337 amino acids from the C-terminal region of Human PDS5A
Specificity:	This antibody recognizes Human SCC-112 / PDS5A (C-term).
Formulation:	PBS containing 0.09% (W/V) Sodium Azide as preservative State: Aff - Purified State: Liquid purified Ig fraction
Concentration:	lot specific
Purification:	Protein A column, followed by peptide affinity purification
Conjugation:	Unconjugated
Storage:	Store undiluted at 2-8°C for one month or (in aliquots) at -20°C for longer. Avoid repeated freezing and thawing.
Stability:	Shelf life: one year from despatch.
Gene Name:	PDS5 cohesin associated factor A
Database Link:	<a href="#">Entrez Gene 23244 Human Q29RF7</a>
Background:	PDS5A may contribute to regulation of sister chromatid cohesion during mitosis.
Synonyms:	PDS5, PIG54, KIAA0648, FLJ41012
Note:	<b>Molecular Weight:</b> 150830 Da



[View online »](#)

## Product images:



Western blot analysis of SCC-112 / PDS5A Antibody (C-term) in A549 cell line lysates (35ug/lane). This demonstrates the PDS5A antibody detected the PDS5A protein (arrow).