

## Product datasheet for **AP53247PU-N**

### **P DPR (C-term) Rabbit Polyclonal Antibody**

#### **Product data:**

Product Type:	Primary Antibodies
Applications:	IHC, WB
Recommended Dilution:	<b>ELISA:</b> 1/1000. <b>Western Blot:</b> 1/100-1/500. <b>Immunohistochemistry on Paraffin Sections:</b> 1/10-1/50.
Reactivity:	Human, Mouse
Host:	Rabbit
Isotype:	Ig
Clonality:	Polyclonal
Immunogen:	KLH conjugated synthetic peptide between 828-858 amino acids from the C-terminal region of Human PDPR
Specificity:	This antibody recognizes Human and Mouse PDPR (C-term).
Formulation:	PBS containing 0.09% (W/V) Sodium Azide as preservative State: Aff - Purified State: Liquid purified Ig fraction
Concentration:	lot specific
Purification:	Protein A column, followed by peptide affinity purification
Conjugation:	Unconjugated
Storage:	Store undiluted at 2-8°C for one month or (in aliquots) at -20°C for longer. Avoid repeated freezing and thawing.
Stability:	Shelf life: one year from despatch.
Gene Name:	pyruvate dehydrogenase phosphatase regulatory subunit
Database Link:	<a href="#">Entrez Gene 55066 Human Q8NCN5</a>
Background:	PDPR decreases the sensitivity of PDP1 to magnesium ions, and this inhibition is reversed by the polyamine spermine (By similarity).
Synonyms:	Pyruvate dehydrogenase phosphatase regulatory subunit, mitochondrial, KIAA1990

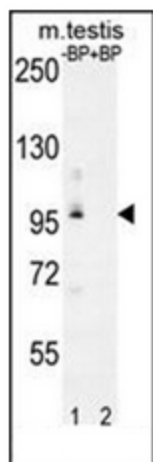


[View online »](#)

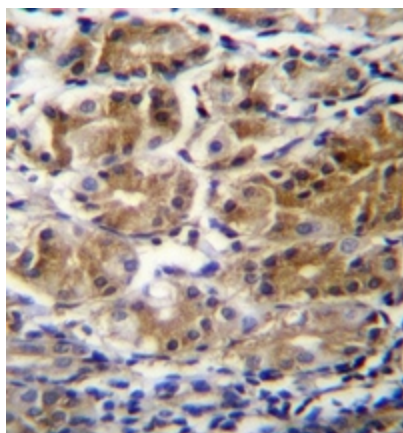
Note: **Molecular Weight:** 99364 Da

Protein Families: Druggable Genome

### Product images:



Western blot analysis of PDPR Antibody (C-term) pre-incubated without (lane 1) and with (lane 2) blocking peptide in mouse testis tissue lysate. PDPR Antibody (C-term) (arrow) was detected using the purified Pab (1:60/250 dilution).



Immunohistochemistry analysis in formalin fixed and paraffin embedded human stomach tissue reacted with PDPR Antibody (C-term) followed by peroxidase conjugation of the secondary antibody and DAB staining.