

Product datasheet for **AP53245PU-N**

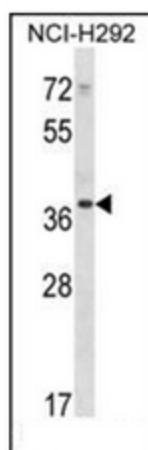
PDLIM1 (C-term) Rabbit Polyclonal Antibody

Product data:

Product Type:	Primary Antibodies
Applications:	WB
Recommended Dilution:	ELISA: 1/1000. Western Blot: 1/100-1/500.
Reactivity:	Human
Host:	Rabbit
Isotype:	Ig
Clonality:	Polyclonal
Immunogen:	KLH conjugated synthetic peptide between 253-282 amino acids from the C-terminal region of Human PDLIM1
Specificity:	This antibody recognizes Human PDLIM1 (C-term).
Formulation:	PBS containing 0.09% (W/V) Sodium Azide as preservative State: Aff - Purified State: Liquid purified Ig fraction
Concentration:	lot specific
Purification:	Protein A column, followed by peptide affinity purification
Conjugation:	Unconjugated
Storage:	Store undiluted at 2-8°C for one month or (in aliquots) at -20°C for longer. Avoid repeated freezing and thawing.
Stability:	Shelf life: one year from despatch.
Gene Name:	PDZ and LIM domain 1
Database Link:	Entrez Gene 9124 Human O00151
Background:	PDLIM1 is a Cytoskeletal protein that may act as an adapter that brings other proteins (like kinases) to the cytoskeleton.
Synonyms:	CLIM1, CLP36, CLP-36, Elfin
Note:	Molecular Weight: 36072 Da



[View online »](#)

Product images:

Western blot analysis of PDLIM1 Antibody (C-term) in NCI-H292 cell line lysates (35ug/lane). This demonstrates the PDLIM1 antibody detected the PDLIM1 protein (arrow).