

## Product datasheet for **AP53242PU-N**

### PDHA2 (Center) Rabbit Polyclonal Antibody

#### Product data:

Product Type:	Primary Antibodies
Applications:	IHC, WB
Recommended Dilution:	<b>ELISA:</b> 1/1000. <b>Western Blot:</b> 1/100-1/500. <b>Immunohistochemistry on Paraffin Sections:</b> 1/50-1/100.
Reactivity:	Human
Host:	Rabbit
Isotype:	Ig
Clonality:	Polyclonal
Immunogen:	KLH conjugated synthetic peptide between 290-318 amino acids from the Central region of Human PDHA2
Specificity:	This antibody recognizes Human PDHA2 (Center).
Formulation:	PBS containing 0.09% (W/V) Sodium Azide as preservative State: Aff - Purified State: Liquid purified Ig fraction
Concentration:	lot specific
Purification:	Protein A column, followed by peptide affinity purification
Conjugation:	Unconjugated
Storage:	Store undiluted at 2-8°C for one month or (in aliquots) at -20°C for longer. Avoid repeated freezing and thawing.
Stability:	Shelf life: one year from despatch.
Gene Name:	pyruvate dehydrogenase (lipoamide) alpha 2
Database Link:	<a href="#">Entrez Gene 5161 Human P29803</a>
Background:	The pyruvate dehydrogenase complex catalyzes the overall conversion of pyruvate to acetyl-CoA and CO <sub>2</sub> . It contains multiple copies of three enzymatic components: pyruvate dehydrogenase (E1), dihydrolipoamide acetyltransferase (E2) and lipoamide dehydrogenase (E3).



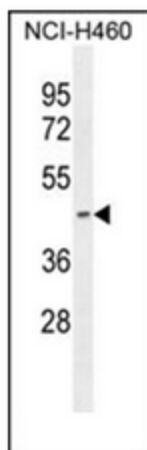
[View online »](#)

**Synonyms:** PDHAL, PDHE1-A type II

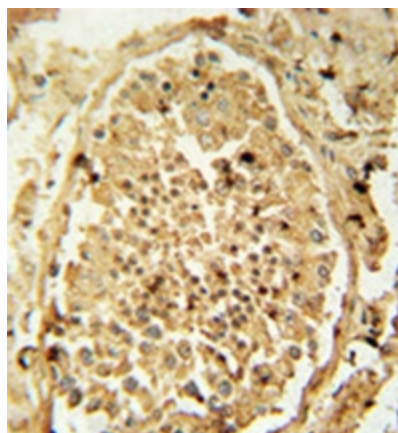
**Note:** **Molecular Weight:** 42933 Da

**Protein Pathways:** Butanoate metabolism, Citrate cycle (TCA cycle), Glycolysis / Gluconeogenesis, Metabolic pathways, Pyruvate metabolism, Valine, leucine and isoleucine biosynthesis

### Product images:



Western blot analysis of PDHA2 Antibody (Center) in NCI-H460 cell line lysates (35ug/lane). This demonstrates the PDHA2 antibody detected the PDHA2 protein (arrow).



Immunohistochemistry analysis in formalin fixed and paraffin embedded human testis tissue reacted with PDHA2 Antibody (Center) followed by peroxidase conjugation of the secondary antibody and DAB staining.