

## Product datasheet for **AP53241PU-N**

### PDHA1 (Center) Rabbit Polyclonal Antibody

#### Product data:

|                       |  |
|-----------------------|--|
| Product Type:         | Primary Antibodies   |
| Applications:         | WB   |
| Recommended Dilution: | <b>ELISA:</b> 1/1000.<br><b>Western Blot:</b> 1/100-1/500.   |
| Reactivity:           | Human  |
| Host:                 | Rabbit   |
| Isotype:              | Ig   |
| Clonality:            | Polyclonal   |
| Immunogen:            | KLH conjugated synthetic peptide between 233~263 amino acids from the Central region of Human PDHA1                    |
| Specificity:          | This antibody recognizes Human PDHA1 (Center).   |
| Formulation:          | PBS containing 0.09% (W/V) Sodium Azide as preservative<br>State: Aff - Purified<br>State: Liquid purified Ig fraction |
| Concentration:        | lot specific   |
| Purification:         | Protein A column, followed by peptide affinity purification  |
| Conjugation:          | Unconjugated   |
| Storage:              | Store undiluted at 2-8°C for one month or (in aliquots) at -20°C for longer.<br>Avoid repeated freezing and thawing.   |
| Stability:            | Shelf life: one year from despatch.  |
| Gene Name:            | pyruvate dehydrogenase (lipoamide) alpha 1   |
| Database Link:        | <a href="#">Entrez Gene 5160 Human P08559</a>  |



[View online »](#)

**Background:**

The pyruvate dehydrogenase (PDH) complex is a nuclear-encoded mitochondrial multienzyme complex that catalyzes the overall conversion of pyruvate to acetyl-CoA and CO<sub>2</sub>, and provides the primary link between glycolysis and the tricarboxylic acid (TCA) cycle. The PDH complex is composed of multiple copies of three enzymatic components: pyruvate dehydrogenase (E1), dihydrolipoamide acetyltransferase (E2) and lipoamide dehydrogenase (E3). The E1 enzyme is a heterotetramer of two alpha and two beta subunits. This gene encodes the E1 alpha 1 subunit containing the E1 active site, and plays a key role in the function of the PDH complex. Mutations in this gene are associated with pyruvate dehydrogenase E1-alpha deficiency and X-linked Leigh syndrome.

**Synonyms:**

PHE1A, PDHE1-A type I

**Note:**

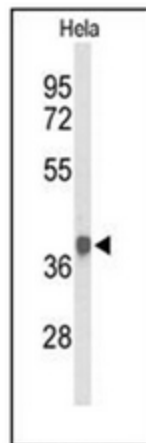
**Molecular Weight:** 43296 Da

**Protein Families:**

Druggable Genome

**Protein Pathways:**

Butanoate metabolism, Citrate cycle (TCA cycle), Glycolysis / Gluconeogenesis, Metabolic pathways, Pyruvate metabolism, Valine, leucine and isoleucine biosynthesis

**Product images:**

Western blot analysis of PDHA1 Antibody (Center) in HeLa cell line lysates (35ug/lane). PDHA1 (arrow) was detected using the purified Pab.