

## Product datasheet for **AP53240PU-N**

### PDHA1 Rabbit Polyclonal Antibody

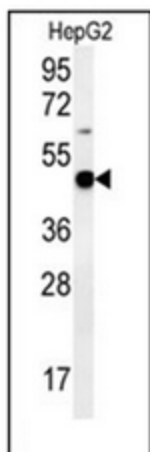
#### Product data:

Product Type:	Primary Antibodies
Applications:	WB
Recommended Dilution:	<b>ELISA:</b> 1/1000. <b>Western Blot:</b> 1/100-1/500.
Reactivity:	Human
Host:	Rabbit
Isotype:	Ig
Clonality:	Polyclonal
Immunogen:	Recombinant Human PDHA1 protein
Specificity:	This antibody recognizes Human PDHA1.
Formulation:	PBS containing 0.09% (W/V) Sodium Azide as preservative State: Aff - Purified State: Liquid purified Ig fraction
Concentration:	lot specific
Purification:	Protein A column, followed by recombinant protein affinity purification
Conjugation:	Unconjugated
Storage:	Store undiluted at 2-8°C for one month or (in aliquots) at -20°C for longer. Avoid repeated freezing and thawing.
Stability:	Shelf life: one year from despatch.
Gene Name:	pyruvate dehydrogenase (lipoamide) alpha 1
Database Link:	<a href="#">Entrez Gene 5160 Human P08559</a>
Synonyms:	PHE1A, PDHE1-A type I
Note:	<b>Molecular Weight:</b> 43296 Da
Protein Families:	Druggable Genome
Protein Pathways:	Butanoate metabolism, Citrate cycle (TCA cycle), Glycolysis / Gluconeogenesis, Metabolic pathways, Pyruvate metabolism, Valine, leucine and isoleucine biosynthesis

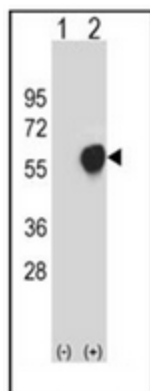


[View online »](#)

## Product images:



Western blot analysis of PDHA1 Antibody in HepG2 cell line lysates (35ug/lane). This demonstrates the PDHA1 antibody detected the PDHA1 protein (arrow).



Western blot analysis of PDHA1 (arrow) using PDHA1 Antibody. 293 cell lysates (2 ug/lane) either nontransfected (Lane 1) or transiently transfected (Lane 2) with the PDHA1 gene.