

Product datasheet for **AP53238PU-N**

PDE6C (Center) Rabbit Polyclonal Antibody

Product data:

Product Type:	Primary Antibodies
Applications:	IHC, WB
Recommended Dilution:	ELISA: 1/1000. Western Blot: 1/1000. Immunohistochemistry on Paraffin Sections: 1/50-1/100.
Reactivity:	Human, Mouse
Host:	Rabbit
Isotype:	Ig
Clonality:	Polyclonal
Immunogen:	KLH conjugated synthetic peptide between 271~300 amino acids from the Central region of Human PDE6C
Specificity:	This antibody recognizes Human and Mouse PDE6C (Center).
Formulation:	PBS containing 0.09% (W/V) Sodium Azide as preservative State: Aff - Purified State: Liquid purified Ig fraction
Concentration:	lot specific
Purification:	Protein A column, followed by peptide affinity purification
Conjugation:	Unconjugated
Storage:	Store undiluted at 2-8°C for one month or (in aliquots) at -20°C for longer. Avoid repeated freezing and thawing.
Stability:	Shelf life: one year from despatch.
Gene Name:	phosphodiesterase 6C
Database Link:	Entrez Gene 5146 Human P51160
Background:	PDE6C is the alpha-prime subunit of cone phosphodiesterase, which is composed of a homodimer of two alpha-prime subunits and 3 smaller proteins of 11, 13, and 15 kDa.
Synonyms:	Phosphodiesterase 6C, Phosphodiesterase-6C cGMP-specific, PDEA2, COD4

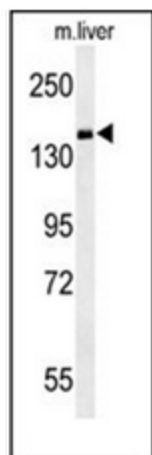


[View online »](#)

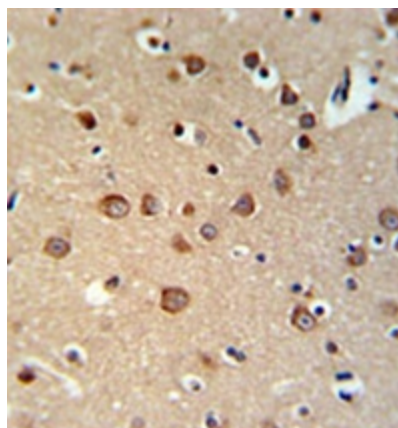
Note: **Molecular Weight:** 99147 Da

Protein Families: Druggable Genome

Product images:



Western blot analysis of PDE6C Antibody (Center) in mouse liver tissue lysates (35ug/lane). PDE6C (arrow) was detected using the purified Pab.



Immunohistochemistry analysis in formalin fixed and paraffin embedded brain tissue reacted with PDE6C Antibody (Center) followed by peroxidase conjugation of the secondary antibody and DAB staining.