

## Product datasheet for **AP53236PU-N**

### **PDE4 (PDE4B) (Center) Rabbit Polyclonal Antibody**

#### **Product data:**

Product Type:	Primary Antibodies
Applications:	FC, WB
Recommended Dilution:	<b>ELISA:</b> 1/1000. <b>Western Blot:</b> 1/100-1/500. <b>Flow Cytometry:</b> 1/10-1/50.
Reactivity:	Human
Host:	Rabbit
Isotype:	Ig
Clonality:	Polyclonal
Immunogen:	KLH conjugated synthetic peptide between 196-225 amino acids from the Central region of Human PDE4B
Specificity:	This antibody recognizes Human PDE4B (Center).
Formulation:	PBS containing 0.09% (W/V) Sodium Azide as preservative State: Aff - Purified State: Liquid purified Ig fraction
Concentration:	lot specific
Purification:	Protein A column, followed by peptide affinity purification
Conjugation:	Unconjugated
Storage:	Store undiluted at 2-8°C for one month or (in aliquots) at -20°C for longer. Avoid repeated freezing and thawing.
Stability:	Shelf life: one year from despatch.
Gene Name:	phosphodiesterase 4B
Database Link:	<a href="#">Entrez Gene 5142 Human Q07343</a>



[View online »](#)

**Background:**

This gene is a member of the type IV, cyclic AMP (cAMP)-specific, cyclic nucleotide phosphodiesterase (PDE) family. Cyclic nucleotides are important second messengers that regulate and mediate a number of cellular responses to extracellular signals, such as hormones, light, and neurotransmitters. The cyclic nucleotide phosphodiesterases (PDEs) regulate the cellular concentrations of cyclic nucleotides and thereby play a role in signal transduction. This gene encodes a protein that specifically hydrolyzes cAMP. Altered activity of this protein has been associated with schizophrenia and bipolar affective disorder. Alternate transcriptional splice variants, encoding different isoforms, have been characterized.

**Synonyms:**

PDE4B, DPDE4, cAMP-specific 3',5'-cyclic phosphodiesterase 4B, EC=3.1.4.17, PDE32

**Note:**

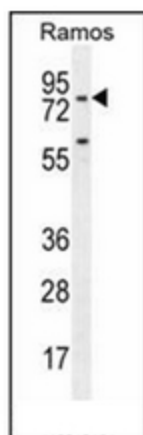
**Molecular Weight:** 83343 Da

**Protein Families:**

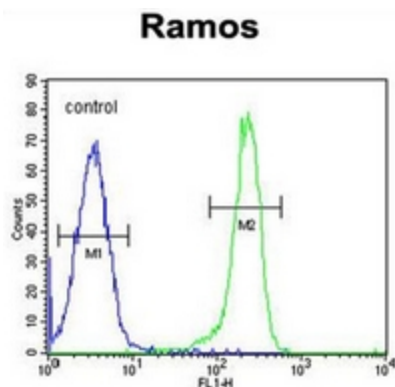
Druggable Genome

**Protein Pathways:**

Pregnane-mediated oocyte maturation, Purine metabolism

**Product images:**


Western blot analysis of PDE4B Antibody (Center) in Ramos cell line lysates (35ug/lane). This demonstrates the PDE4B antibody detected the PDE4B protein (arrow).



Flow cytometric analysis of Ramos cells using PDE4B Antibody (Center) (right histogram) compared to a negative control cell (left histogram). FITC-conjugated goat-anti-rabbit secondary antibodies were used for the analysis.