

Product datasheet for **AP53235PU-N**

PDE3B (Center) Rabbit Polyclonal Antibody

Product data:

Product Type:	Primary Antibodies
Applications:	FC, IF, WB
Recommended Dilution:	Western Blot: 1/500 - 1/1000. Flow Cytometry: 1/10-1/50. Immunofluorescence: 1/10-1/10.
Reactivity:	Human
Host:	Rabbit
Isotype:	Ig
Clonality:	Polyclonal
Immunogen:	KLH conjugated synthetic peptide between 400-427 amino acids from the Central region of Human PDE3B
Specificity:	This antibody recognizes Human PDE3B (Center).
Formulation:	PBS containing 0.09% (W/V) Sodium Azide as preservative State: Aff - Purified State: Liquid purified Ig fraction
Purification:	Protein A column, followed by peptide affinity purification
Conjugation:	Unconjugated
Storage:	Store undiluted at 2-8°C for one month or (in aliquots) at -20°C for longer. Avoid repeated freezing and thawing.
Stability:	Shelf life: one year from despatch.
Gene Name:	phosphodiesterase 3B
Database Link:	Entrez Gene 5140 Human Q13370
Background:	Cyclic nucleotide phosphodiesterase with a dual-specificity for the second messengers cAMP and cGMP, which are key regulators of many important physiological processes; PDE3B may play a role in fat metabolism.
Synonyms:	Phosphodiesterase 3B, Phosphodiesterase-3B cGMP-inhibited, HcGIP1, CGIPDE1, CGI-PDE B, CGIP, CGIP1



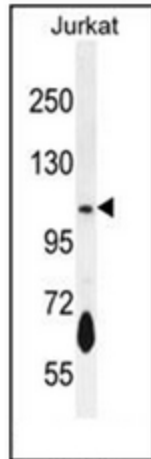
[View online »](#)

Note: **Molecular Weight:** 124333 Da

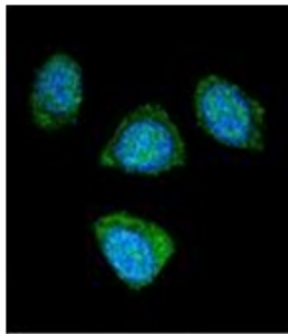
Protein Families: Druggable Genome, Transmembrane

Protein Pathways: Insulin signaling pathway, Progesterone-mediated oocyte maturation, Purine metabolism

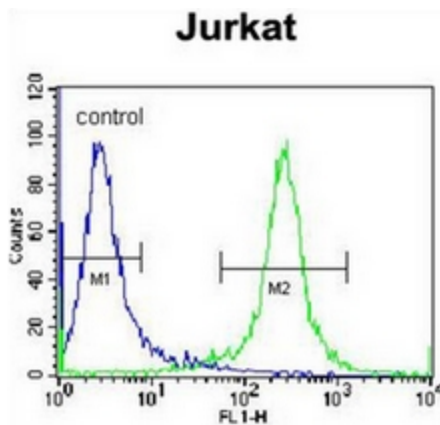
Product images:



Western blot analysis of PDE3B Antibody (Center) in Jurkat cell line lysates (35ug/lane). This demonstrates the PDE3B antibody detected the PDE3B protein (arrow).



Confocal immunofluorescent analysis of PDE3B Antibody (Center) with 293 cell followed by Alexa Fluor 488-conjugated goat anti-rabbit IgG (green). DAPI was used to stain the cell nuclear (blue).



Flow cytometric analysis of Jurkat cells using PDE3B Antibody (Center) (right histogram) compared to a negative control cell (left histogram). FITC-conjugated donkey-anti-rabbit secondary antibodies were used for the analysis.