

Product datasheet for **AP53233PU-N**

PDE1B (C-term) Rabbit Polyclonal Antibody

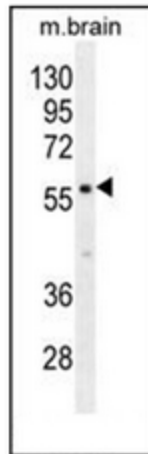
Product data:

Product Type:	Primary Antibodies
Applications:	IHC, WB
Recommended Dilution:	ELISA: 1/1000. Western Blot: 1/1000. Immunohistochemistry on Paraffin Sections: 1/10-1/50.
Reactivity:	Human, Mouse
Host:	Rabbit
Isotype:	Ig
Clonality:	Polyclonal
Immunogen:	KLH conjugated synthetic peptide between 473-500 amino acids from the C-terminal region of Human PDE1B
Specificity:	This antibody recognizes Human and Mouse PDE1B (C-term).
Formulation:	PBS containing 0.09% (W/V) Sodium Azide as preservative State: Aff - Purified State: Liquid purified Ig fraction
Concentration:	lot specific
Purification:	Protein A column, followed by peptide affinity purification
Conjugation:	Unconjugated
Storage:	Store undiluted at 2-8°C for one month or (in aliquots) at -20°C for longer. Avoid repeated freezing and thawing.
Stability:	Shelf life: one year from despatch.
Gene Name:	phosphodiesterase 1B
Database Link:	Entrez Gene 18574 Mouse Entrez Gene 5153 Human Q01064

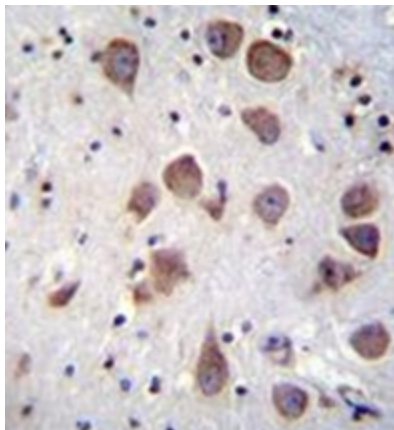


[View online »](#)

- Background:** Cyclic nucleotide phosphodiesterases (PDEs) catalyze hydrolysis of the cyclic nucleotides cAMP and cGMP to the corresponding nucleoside 5-prime-monophosphates. Mammalian PDEs have been classified into several families based on their biochemical properties. Members of the PDE1 family, such as PDE1B, are calmodulin (see MIM 114180)-dependent PDEs (CaM-PDEs) that are stimulated by a calcium-calmodulin complex (Repaske et al., 1992 [PubMed 1326532]).
- Synonyms:** Phosphodiesterase 1B, Phosphodiesterase-1B calmodulin-dependent, Cam-PDE 1B, PDE1B1, PDES1B
- Note:** **Molecular Weight:** 61380 Da
- Protein Families:** Druggable Genome
- Protein Pathways:** Calcium signaling pathway, Progesterone-mediated oocyte maturation, Purine metabolism

Product images:

Western blot analysis of PDE1B Antibody (C-term) in mouse brain tissue lysates (35ug/lane). This demonstrates the PDE1B antibody detected the PDE1B protein (arrow).



Immunohistochemistry analysis in formalin fixed and paraffin embedded human brain tissue reacted with PDE1B Antibody (C-term) followed by peroxidase conjugation of the secondary antibody and DAB staining.