

Product datasheet for **AP53228PU-N**

PD L2 (PDCD1LG2) (N-term) Rabbit Polyclonal Antibody

Product data:

Product Type:	Primary Antibodies
Applications:	IHC, WB
Recommended Dilution:	ELISA: 1/1000. Western Blot: 1/1000. Immunohistochemistry on Paraffin Sections: 1/10-1/50.
Reactivity:	Human
Host:	Rabbit
Isotype:	Ig
Clonality:	Polyclonal
Immunogen:	KLH conjugated synthetic peptide between 45-75 amino acids from the N-terminal region of Human CD273 / PDL2
Specificity:	This antibody recognizes Human CD273 / PDL2 (N-term).
Formulation:	PBS containing 0.09% (W/V) Sodium Azide as preservative State: Aff - Purified State: Liquid purified Ig fraction
Concentration:	lot specific
Purification:	Protein A column, followed by peptide affinity purification
Conjugation:	Unconjugated
Storage:	Store undiluted at 2-8°C for one month or (in aliquots) at -20°C for longer. Avoid repeated freezing and thawing.
Stability:	Shelf life: one year from despatch.
Gene Name:	programmed cell death 1 ligand 2
Database Link:	Entrez Gene 80380 Human Q9BQ51
Background:	PDCD1LG2 is involved in the costimulatory signal, essential for T-cell proliferation and IFNG production in a PDCD1-independent manner. Interaction with PDCD1 inhibits T-cell proliferation by blocking cell cycle progression and cytokine production (By similarity).
Synonyms:	PD-L2, PD-1-ligand 2, PDCD1 ligand 2, PDCD1LG2, B7DC, PDCD1L2



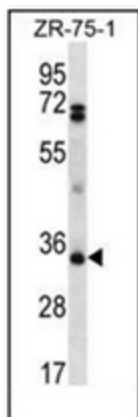
[View online »](#)

Note: **Molecular Weight:** 30957 Da

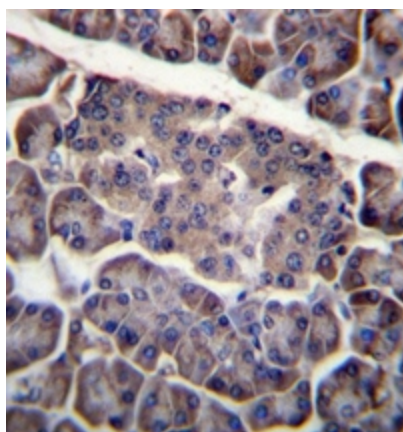
Protein Families: Transmembrane

Protein Pathways: Cell adhesion molecules (CAMs)

Product images:



Western blot analysis of CD273 / PDL2 Antibody (N-term) in ZR-75-1 cell line lysates (35ug/lane).



Immunohistochemistry analysis in formalin fixed and paraffin embedded human pancreas tissue reacted with CD273 / PDL2 Antibody (N-term) followed by peroxidase conjugation of the secondary antibody and DAB staining.