

## Product datasheet for **AP53227PU-N**

### PHOS (PDC) (Center) Rabbit Polyclonal Antibody

#### Product data:

Product Type:	Primary Antibodies
Applications:	WB
Recommended Dilution:	<b>ELISA:</b> 1/1000. <b>Western Blot:</b> 1/100-1/500.
Reactivity:	Human
Host:	Rabbit
Isotype:	Ig
Clonality:	Polyclonal
Immunogen:	KLH conjugated synthetic peptide between 58-89 amino acids from the Central region of Human Phosducin / PDC.
Specificity:	This antibody recognizes Human Phosducin / PDC (Center).
Formulation:	PBS containing 0.09% (W/V) Sodium Azide as preservative State: Aff - Purified State: Liquid purified Ig fraction
Concentration:	lot specific
Purification:	Protein A column, followed by peptide affinity purification
Conjugation:	Unconjugated
Storage:	Store undiluted at 2-8°C for one month or (in aliquots) at -20°C for longer. Avoid repeated freezing and thawing.
Stability:	Shelf life: one year from despatch.
Gene Name:	phosducin
Database Link:	<a href="#">Entrez Gene 5132 Human P20941</a>



[View online »](#)

**Background:**

This gene encodes a phosphoprotein, which is located in the outer and inner segments of the rod cells in the retina. This protein may participate in the regulation of visual phototransduction or in the integration of photoreceptor metabolism. It modulates the phototransduction cascade by interacting with the beta and gamma subunits of the retinal G-protein transducin. This gene is a potential candidate gene for retinitis pigmentosa and Usher syndrome type II. Alternatively spliced transcript variants encoding different isoforms have been identified.

**Synonyms:**

PHD, PhLOP, MEKA

**Note:**

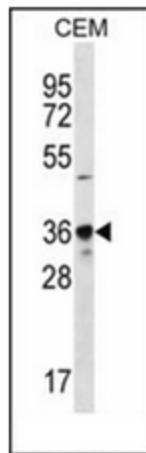
**Molecular Weight:** 28246 Da

**Protein Families:**

Druggable Genome

**Protein Pathways:**

Olfactory transduction

**Product images:**

Western blot analysis of Phosducin / PDC Antibody (Center) in CEM cell line lysates (35ug/lane). This demonstrates the PDC antibody detected the PDC protein (arrow).