

Product datasheet for **AP53225PU-N**

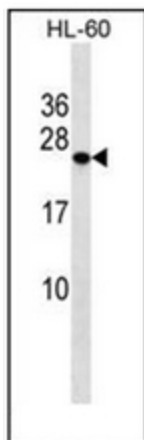
PCTP (Center) Rabbit Polyclonal Antibody

Product data:

Product Type:	Primary Antibodies
Applications:	WB
Recommended Dilution:	ELISA: 1/1000. Western Blot: 1/100-1/500.
Reactivity:	Human
Host:	Rabbit
Isotype:	Ig
Clonality:	Polyclonal
Immunogen:	KLH conjugated synthetic peptide between 58-87 amino acids from the Central region of human PCTP
Specificity:	This antibody recognizes Human PCTP (Cenetr).
Formulation:	PBS containing 0.09% (W/V) Sodium Azide as preservative State: Aff - Purified State: Liquid purified Ig fraction
Concentration:	lot specific
Purification:	Protein A column, followed by peptide affinity purification
Conjugation:	Unconjugated
Storage:	Store undiluted at 2-8°C for one month or (in aliquots) at -20°C for longer. Avoid repeated freezing and thawing.
Stability:	Shelf life: one year from despatch.
Gene Name:	phosphatidylcholine transfer protein
Database Link:	Entrez Gene 58488 Human Q9UKL6
Background:	PCTP catalyzes the transfer of phosphatidylcholine between membranes. Binds a single lipid molecule.
Synonyms:	PC-TP, STARD2
Note:	Molecular Weight: 24843 Da



[View online »](#)

Product images:

Western blot analysis of PCTP Antibody (Center) in HL-60 cell line lysates (35ug/lane). This demonstrates the PCTP antibody detected the PCTP protein (arrow).