

## Product datasheet for **AP53220PU-N**

### PCOTH (Center) Rabbit Polyclonal Antibody

#### Product data:

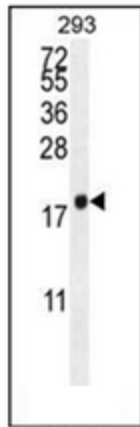
Product Type:	Primary Antibodies
Applications:	FC, IHC, WB
Recommended Dilution:	<b>ELISA:</b> 1/1000. <b>Western Blot:</b> 1/100-1/500. <b>Flow Cytometry:</b> 1/10-1/50. <b>Immunohistochemistry on Paraffin Sections:</b> 1/50-1/100.
Reactivity:	Human
Host:	Rabbit
Isotype:	Ig
Clonality:	Polyclonal
Immunogen:	KLH conjugated synthetic peptide between 21-50 amino acids from the Central region of Human PCOTH
Specificity:	This antibody recognizes Human PCOTH (Center).
Formulation:	PBS containing 0.09% (W/V) Sodium Azide as preservative State: Aff - Purified State: Liquid purified Ig fraction
Concentration:	lot specific
Purification:	Protein A column, followed by peptide affinity purification
Conjugation:	Unconjugated
Storage:	Store undiluted at 2-8°C for one month or (in aliquots) at -20°C for longer. Avoid repeated freezing and thawing.
Stability:	Shelf life: one year from despatch.
Gene Name:	C1QTNF9B antisense RNA 1
Database Link:	<a href="#">Entrez Gene 542767 Human Q58A44</a>
Background:	May be involved in growth and survival of prostate cancer cells through the TAF-Ibeta pathway
Synonyms:	Protein



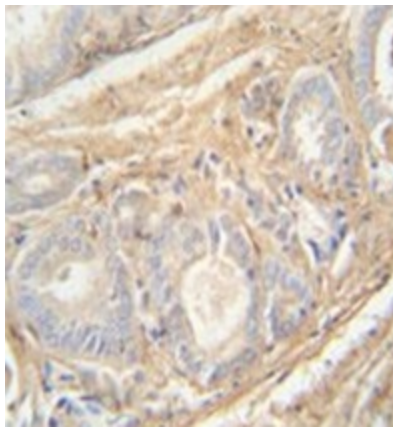
[View online »](#)

Note: **Molecular Weight:** 10968 Da

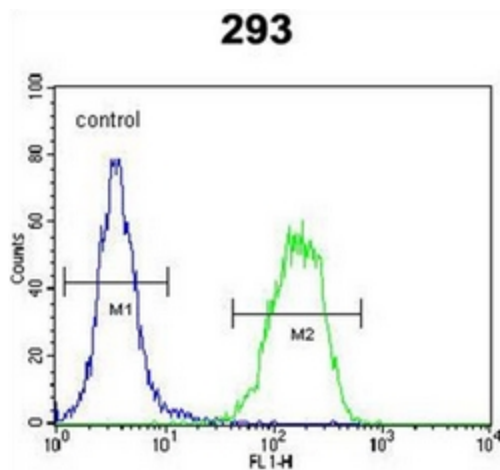
**Product images:**



Western blot analysis of PCOTH Antibody (Center) in 293 cell line lysates (35ug/lane). This demonstrates the PCOTH antibody detected the PCOTH protein (arrow).



Immunohistochemistry analysis in formalin fixed and paraffin embedded human prostate carcinoma reacted with PCOTH Antibody (Center) followed by peroxidase conjugation of the secondary antibody and DAB staining.



Flow cytometric analysis of 293 cells using PCOTH Antibody (Center) (right histogram) compared to a negative control cell (left histogram). FITC-conjugated goat-anti-rabbit secondary antibodies were used for the analysis.