

## Product datasheet for **AP53217PU-N**

### PCDHGC5 (Center) Rabbit Polyclonal Antibody

#### Product data:

|                       |                                                                                                                            |
|-----------------------|----------------------------------------------------------------------------------------------------------------------------|
| Product Type:         | Primary Antibodies                                                                                                         |
| Applications:         | IHC, WB                                                                                                                    |
| Recommended Dilution: | <b>ELISA:</b> 1/1000.<br><b>Western Blot:</b> 1/100-1/500.<br><b>Immunohistochemistry on Paraffin Sections:</b> 1/10-1/50. |
| Reactivity:           | Human, Mouse                                                                                                               |
| Host:                 | Rabbit                                                                                                                     |
| Isotype:              | Ig                                                                                                                         |
| Clonality:            | Polyclonal                                                                                                                 |
| Immunogen:            | KLH conjugated synthetic peptide between 498-526 amino acids from the Central region of human PCDHGC5                      |
| Specificity:          | This antibody recognizes Human and Mouse PCDHGC5 (Center).                                                                 |
| Formulation:          | PBS containing 0.09% (W/V) Sodium Azide as preservative<br>State: Aff - Purified<br>State: Liquid purified Ig fraction     |
| Concentration:        | lot specific                                                                                                               |
| Purification:         | Protein A column, followed by peptide affinity purification                                                                |
| Conjugation:          | Unconjugated                                                                                                               |
| Storage:              | Store undiluted at 2-8°C for one month or (in aliquots) at -20°C for longer.<br>Avoid repeated freezing and thawing.       |
| Stability:            | Shelf life: one year from despatch.                                                                                        |
| Gene Name:            | protocadherin gamma subfamily C, 5                                                                                         |
| Database Link:        | <a href="#">Entrez Gene 56097 Human Q9Y5F6</a>                                                                             |



[View online »](#)

**Background:**

This gene is a member of the protocadherin gamma gene cluster, one of three related clusters tandemly linked on chromosome five. These gene clusters have an immunoglobulin-like organization, suggesting that a novel mechanism may be involved in their regulation and expression. The gamma gene cluster includes 22 genes divided into 3 subfamilies. Subfamily A contains 12 genes, subfamily B contains 7 genes and 2 pseudogenes, and the more distantly related subfamily C contains 3 genes. The tandem array of 22 large, variable region exons are followed by a constant region, containing 3 exons shared by all genes in the cluster. Each variable region exon encodes the extracellular region, which includes 6 cadherin ectodomains and a transmembrane region. The constant region exons encode the common cytoplasmic region. These neural cadherin-like cell adhesion proteins most likely play a critical role in the establishment and function of specific cell-cell connections in the brain. Alternative splicing has been described for the gamma cluster genes.

**Synonyms:**

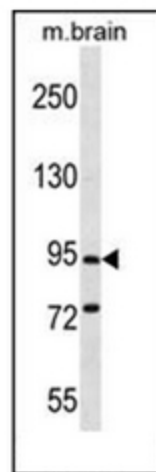
Protocadherin gamma-C5, PCDH-gamma-C5

**Note:**

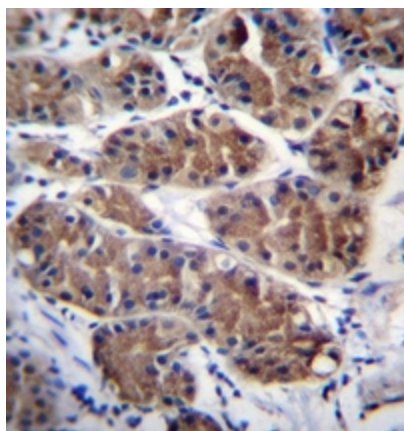
**Molecular Weight:** 101921 Da

**Protein Families:**

Transmembrane

**Product images:**

Western blot analysis of PCDHGC5 Antibody (Center) in mouse brain tissue lysates (35ug/lane). This demonstrates the PCDHGC5 antibody detected the PCDHGC5 protein (arrow).



Immunohistochemistry analysis in formalin fixed and paraffin embedded human stomach tissue reacted with PCDHGC5 Antibody (Center) followed by peroxidase conjugation of the secondary antibody and DAB staining.