

## Product datasheet for **AP53210PU-N**

### PCDHB15 (N-term) Rabbit Polyclonal Antibody

#### Product data:

Product Type:	Primary Antibodies
Applications:	WB
Recommended Dilution:	<b>Western blot:</b> 1/100-1/500. Enzyme immunoassay: 1/1000.
Reactivity:	Human
Host:	Rabbit
Isotype:	Ig
Clonality:	Polyclonal
Immunogen:	Synthetic peptide - KLH conjugated - corresponding to the N-terminal region (between 120-148aa) from of human PCDHB15.
Specificity:	This antibody recognizes PCDHB15 at N-term.
Formulation:	PBS with 0.09% (W/V) Sodium azide State: Aff - Purified State: Liquid purified Ig fraction
Concentration:	lot specific
Purification:	Purified through a Protein A column followed by peptide affinity purification
Conjugation:	Unconjugated
Storage:	Store undiluted at 2-8°C for one month or (in aliquots) at -20°C for longer. Avoid repeated freezing and thawing.
Stability:	Shelf life: one year from despatch.
Gene Name:	protocadherin beta 15
Database Link:	<a href="#">Entrez Gene 56121 Human Q9Y5E8</a>



[View online »](#)

**Background:**

The PCDHB15 gene is a member of the protocadherin beta gene cluster, one of three related gene clusters tandemly linked on chromosome five. The gene clusters demonstrate an unusual genomic organization similar to that of B-cell and T-cell receptor gene clusters. The beta cluster contains 16 genes and 3 pseudogenes, each encoding 6 extracellular cadherin domains and a cytoplasmic tail that deviates from others in the cadherin superfamily. The extracellular domains interact in a homophilic manner to specify differential cell-cell connections. Unlike the alpha and gamma clusters, the transcripts from these genes are made up of only one large exon, not sharing common 3' exons as expected. These neural cadherin-like cell adhesion proteins are integral plasma membrane proteins. Their specific functions are unknown but they most likely play a critical role in the establishment and function of specific cell-cell neural connections.

**Synonyms:**

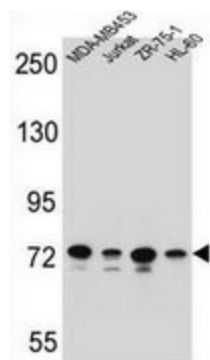
Protocadherin beta-15, PCDH-beta-15

**Note:**

**Molecular Weight:** 86329 Da

**Protein Families:**

Transmembrane

**Product images:**


Western blot analysis in MDA-MB453, Jurkat, ZR-75-1, HL-60 cell line lysates (35ug/lane) using PCDHB15 antibody. (N-term). This demonstrates the PCDHB15 antibody detected the PCDHB15 protein (arrow).