

## Product datasheet for **AP53207PU-N**

### Protocadherin beta 12 (PCDHB12) (C-term) Rabbit Polyclonal Antibody

#### Product data:

Product Type:	Primary Antibodies
Applications:	IHC, WB
Recommended Dilution:	This antibody is suitable for immunohistochemistry on paraffin sections and Western blotting. The suggested dilution is: <b>Immunohistochemistry on paraffin sections</b> 1/10-1/50. <b>Western blotting:</b> 1/100-1/500.
Reactivity:	Human
Host:	Rabbit
Isotype:	Ig
Clonality:	Polyclonal
Immunogen:	Synthetic peptide - KLH conjugated - corresponding to the C-terminal region (between 765-795aa) of human PCDHB12.
Specificity:	This antibody detects human PCDHB12 at C-term.
Formulation:	PBS with 0.09% (W/V) Sodium Azide. State: Aff - Purified State: Liquid purified Ig fraction
Concentration:	lot specific
Purification:	Purified through a protein A column; followed by peptide affinity purification.
Conjugation:	Unconjugated
Storage:	Store the antibody undiluted at 2-8°C for one month or (in aliquots) at -20°C for longer. Avoid repeated freezing and thawing.
Stability:	Shelf life: one year from despatch.
Gene Name:	protocadherin beta 12
Database Link:	<a href="#">Entrez Gene 56124 Human Q9Y5F1</a>



[View online »](#)

**Background:**

The PCDHB12 gene is a member of the protocadherin beta gene cluster, one of three related gene clusters tandemly linked on chromosome five. The gene clusters demonstrate an unusual genomic organization similar to that of B-cell and T-cell receptor gene clusters. The beta cluster contains 16 genes and 3 pseudogenes, each encoding 6 extracellular cadherin domains and a cytoplasmic tail that deviates from others in the cadherin superfamily. The extracellular domains interact in a homophilic manner to specify differential cell-cell connections. Unlike the alpha and gamma clusters, the transcripts from these genes are made up of only one large exon, not sharing common 3' exons as expected. These neural cadherin-like cell adhesion proteins are integral plasma membrane proteins. Their specific functions are unknown but they most likely play a critical role in the establishment and function of specific cell-cell neural connections.

**Synonyms:**

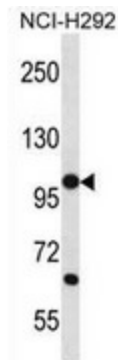
Protocadherin beta-12, PCDH-beta-12

**Note:**

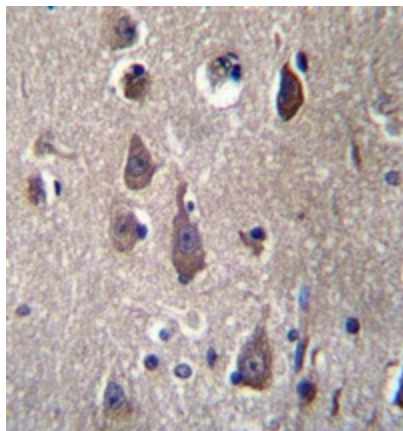
**Molecular Weight:** 86770 Da

**Protein Families:**

Transmembrane

**Product images:**


Western blot analysis in NCI-H292 cell line lysates (35ug/lane) using PCDHB12 antibody. (C-term). This demonstrates the PCDHB12 antibody detected the PCDHB12 protein (arrow).



Immunohistochemistry analysis in human brain tissue (formalin-fixed, paraffin-embedded) using PCDHB12 antibody. (C-term), followed by peroxidase conjugation of the secondary antibody and DAB staining. This data demonstrates the use of PCDHB12 antibody for IHC. Clinical relevance has not been evaluated.