

Product datasheet for **AP53190PU-N**

PCBD1 (Center) Rabbit Polyclonal Antibody

Product data:

Product Type:	Primary Antibodies
Applications:	FC, IHC, WB
Recommended Dilution:	ELISA: 1/1000. Western Blot: 1/100 - 1/500. Immunohistochemistry on paraffin sections: 1/50 - 1/100. Flow Cytometry: 1/10 - 1/50.
Reactivity:	Human, Mouse
Host:	Rabbit
Isotype:	Ig
Clonality:	Polyclonal
Immunogen:	KLH conjugated synthetic peptide between 27~56 amino acids from the Center region of human PCBD1
Specificity:	This antibody reacts to PCBD1.
Formulation:	PBS State: Aff - Purified State: Liquid purified Ig fraction Preservative: 0.09% (W/V) sodium azide
Concentration:	lot specific
Purification:	Affinity chromatography on Protein A
Conjugation:	Unconjugated
Storage:	Store the antibody undiluted at 2-8°C for one month or (in aliquots) at -20°C for longer. Avoid repeated freezing and thawing.
Stability:	Shelf life: one year from despatch.
Predicted Protein Size:	12000 Da
Gene Name:	pterin-4 alpha-carbinolamine dehydratase 1
Database Link:	Entrez Gene 13180 Mouse Entrez Gene 5092 Human P61457



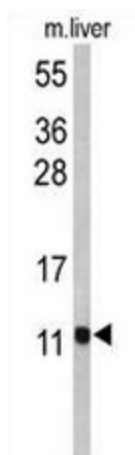
[View online »](#)

Background: PCBD1 encodes pterin-4 alpha-carbinolamine dehydratase, an enzyme involved in phenylalanine hydroxylation. A deficiency of this enzyme leads to hyperphenylalaninemia. The enzyme regulates the homodimerization of the transcription factor hepatocyte nuclear factor 1 (HNF1).

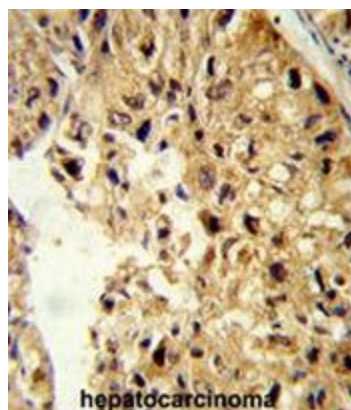
Synonyms: DCOH, PCBD, PHS, Pterin carbinolamine dehydratase

Protein Families: Druggable Genome

Product images:

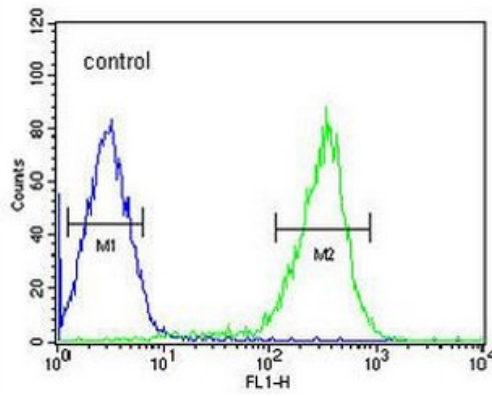


Western blot analysis of PCBD1 Antibody (Center) in mouse liver tissue lysates (35ug/lane). PCBD1 (arrow) was detected using the purified Pab.



Formalin-fixed and paraffin-embedded human hepatocarcinoma reacted with PCBD1 Antibody (Center), which was peroxidase-conjugated to the secondary antibody, followed by DAB staining. This data demonstrates the use of this antibody for immunohistochemistry; clinical relevance has not been evaluated.

HepG2



PCBD1 Antibody (Center) flow cytometric analysis of HepG2 cells (right histogram) compared to a negative control cell (left histogram). FITC-conjugated goat-anti-rabbit secondary antibodies were used for the analysis.