

Product datasheet for **AP53189PU-N**

LPCAT1 (C-term) Rabbit Polyclonal Antibody

Product data:

Product Type:	Primary Antibodies
Applications:	FC, IHC, WB
Recommended Dilution:	ELISA: 1/1000. Western Blot: 1/100 - 1/500. Immunohistochemistry on paraffin sections: 1/50 - 1/100. Flow Cytometry: 1/10 - 1/50.
Reactivity:	Human
Host:	Rabbit
Isotype:	Ig
Clonality:	Polyclonal
Immunogen:	KLH conjugated synthetic peptide between 505~534 amino acids from the C-terminal region of human PCAT1
Specificity:	This antibody reacts to PCAT1.
Formulation:	PBS State: Aff - Purified State: Liquid purified Ig fraction Preservative: 0.09% (W/V) sodium azide
Concentration:	lot specific
Purification:	Affinity chromatography on Protein A
Conjugation:	Unconjugated
Storage:	Store the antibody undiluted at 2-8°C for one month or (in aliquots) at -20°C for longer. Avoid repeated freezing and thawing.
Stability:	Shelf life: one year from despatch.
Predicted Protein Size:	59151 Da
Gene Name:	lysophosphatidylcholine acyltransferase 1
Database Link:	Entrez Gene 79888 Human Q8NF37



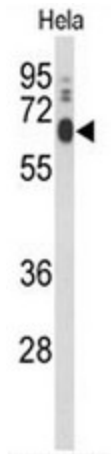
[View online »](#)

Background: PCAT1 acyltransferase (LPCAT; EC 2.3.1.23) catalyzes the conversion of LPC to phosphatidylcholine (PC) in the remodeling pathway of PC biosynthesis.

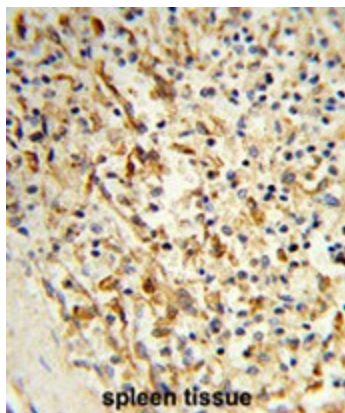
Synonyms: LPCAT1, AYTL2, PFAAP3, Lysophosphatidylcholine acyltransferase 1, LysoPC acyltransferase 1, LPC acyltransferase 1, LPCAT-1

Protein Families: Transmembrane

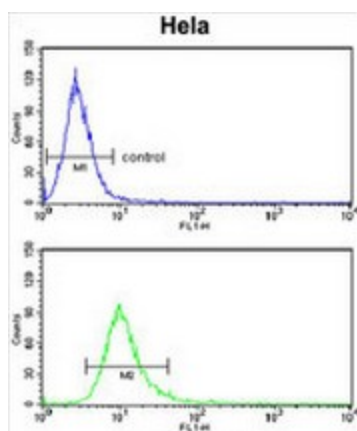
Product images:



Western blot analysis of PCAT1 Antibody (C-term) in HeLa cell line lysates (35ug/lane). PCAT1 (arrow) was detected using the purified Pab.



Formalin-fixed and paraffin-embedded human spleen tissue reacted with PCAT1 Antibody (C-term), which was peroxidase-conjugated to the secondary antibody, followed by DAB staining. This data demonstrates the use of this antibody for immunohistochemistry; clinical relevance has not been evaluated.



PCAT1 Antibody (C-term) flow cytometry analysis of HeLa cells (bottom histogram) compared to a negative control cell (top histogram). FITC-conjugated goat-anti-rabbit secondary antibodies were used for the analysis.