

## Product datasheet for **AP53187PU-N**

### **KAT2B (C-term) Rabbit Polyclonal Antibody**

#### **Product data:**

Product Type:	Primary Antibodies
Applications:	WB
Recommended Dilution:	<b>ELISA:</b> 1/1000. <b>Western Blot:</b> 1/50 - 1/100.
Reactivity:	Human
Host:	Rabbit
Isotype:	Ig
Clonality:	Polyclonal
Immunogen:	KLH conjugated synthetic peptide between 802-832 amino acids from the C-terminal region of human PCAF
Specificity:	This antibody reacts to PCAF.
Formulation:	PBS State: Purified State: Liquid purified Ig fraction Preservative: 0.09% (W/V) sodium azide
Concentration:	lot specific
Purification:	Saturated Ammonium Sulfate (SAS) precipitation
Conjugation:	Unconjugated
Storage:	Store the antibody undiluted at 2-8°C for one month or (in aliquots) at -20°C for longer. Avoid repeated freezing and thawing.
Stability:	Shelf life: one year from despatch.
Predicted Protein Size:	93013 Da
Gene Name:	lysine acetyltransferase 2B
Database Link:	<a href="#">Entrez Gene 8850 Human Q92831</a>



[View online »](#)

**Background:**

CBP and p300 are large nuclear proteins that bind to many sequence-specific factors involved in cell growth and/or differentiation, including c-jun and the adenoviral oncoprotein E1A. The protein encoded by this gene associates with p300/CBP. It has in vitro and in vivo binding activity with CBP and p300, and competes with E1A for binding sites in p300/CBP. It has histone acetyl transferase activity with core histones and nucleosome core particles, indicating that this protein plays a direct role in transcriptional regulation.

**Synonyms:**

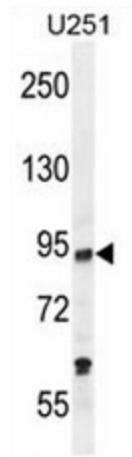
Histone acetylase PCAF, P/CAF

**Protein Families:**

Druggable Genome, Transcription Factors

**Protein Pathways:**

Notch signaling pathway

**Product images:**

PCAF Antibody (C-term) western blot analysis in U251 cell line lysates (35ug/lane). This demonstrates the PCAF antibody detected the PCAF protein (arrow).