

Product datasheet for **AP53186PU-N**

PCB (PC) (N-term) Rabbit Polyclonal Antibody

Product data:

Product Type:	Primary Antibodies
Applications:	IHC, WB
Recommended Dilution:	ELISA: 1/1000. Western Blot: 1/100 - 1/500. Immunohistochemistry on paraffin sections: 1/10 - 1/50.
Reactivity:	Human, Mouse
Host:	Rabbit
Isotype:	Ig
Clonality:	Polyclonal
Immunogen:	KLH conjugated synthetic peptide between 52-82 amino acids from the N-terminal region of human PC
Specificity:	This antibody reacts to PC.
Formulation:	PBS State: Aff - Purified State: Liquid purified Ig fraction Preservative: 0.09% (W/V) sodium azide
Concentration:	lot specific
Purification:	Affinity chromatography on Protein A
Conjugation:	Unconjugated
Storage:	Store the antibody undiluted at 2-8°C for one month or (in aliquots) at -20°C for longer. Avoid repeated freezing and thawing.
Stability:	Shelf life: one year from despatch.
Gene Name:	pyruvate carboxylase
Database Link:	Entrez Gene 18517 Mouse Entrez Gene 5091 Human P11498



[View online »](#)

Background:

This gene encodes pyruvate carboxylase, which requires biotin and ATP to catalyse the carboxylation of pyruvate to oxaloacetate. The active enzyme is a homotetramer arranged in a tetrahedron which is located exclusively in the mitochondrial matrix. Pyruvate carboxylase is involved in gluconeogenesis, lipogenesis, insulin secretion and synthesis of the neurotransmitter glutamate. Mutations in this gene have been associated with pyruvate carboxylase deficiency. Alternatively spliced transcript variants with different 5' UTRs, but encoding the same protein, have been found for this gene. [provided by RefSeq].

Synonyms:

Pyruvate carboxylase mitochondrial, PCB

Note:

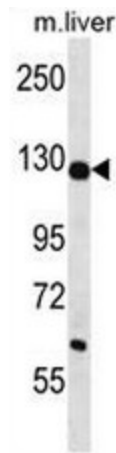
Molecular Weight: 129634 Da

Protein Families:

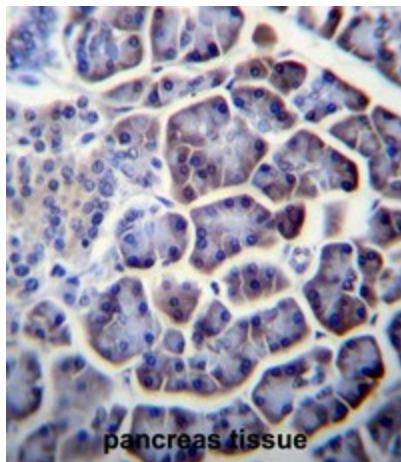
Druggable Genome

Protein Pathways:

Citrate cycle (TCA cycle), Metabolic pathways, Pyruvate metabolism

Product images:

PC Antibody (N-term) western blot analysis in mouse liver tissue lysates (35ug/lane). This demonstrates the PC antibody detected the PC protein (arrow).



PC Antibody (N-term) immunohistochemistry analysis in formalin fixed and paraffin embedded human pancreas tissue followed by peroxidase conjugation of the secondary antibody and DAB staining. This data demonstrates the use of PC Antibody (N-term) for immunohistochemistry. Clinical relevance has not been evaluated.