

Product datasheet for **AP53185PU-N**

PBXIP1 (C-term) Rabbit Polyclonal Antibody

Product data:

Product Type:	Primary Antibodies
Applications:	WB
Recommended Dilution:	ELISA: 1/1000. Western Blot: 1/100 - 1/500.
Reactivity:	Human
Host:	Rabbit
Isotype:	Ig
Clonality:	Polyclonal
Immunogen:	Immunized with a KLH conjugated synthetic peptide between 472-501 amino acids from the C-terminal region of human PBXIP1
Specificity:	This antibody reacts to PBXIP1.
Formulation:	PBS State: Aff - Purified State: Liquid purified Ig fraction Preservative: 0.09% (W/V) sodium azide
Concentration:	lot specific
Purification:	Affinity chromatography on Protein A
Conjugation:	Unconjugated
Storage:	Store the antibody undiluted at 2-8°C for one month or (in aliquots) at -20°C for longer. Avoid repeated freezing and thawing.
Stability:	Shelf life: one year from despatch.
Predicted Protein Size:	80643 Da
Gene Name:	PBX homeobox interacting protein 1
Database Link:	Entrez Gene 57326 Human Q96AQ6



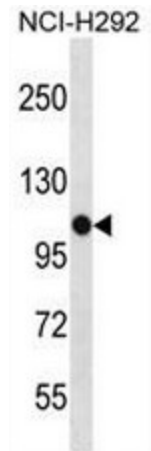
[View online »](#)

Background: Regulator of pre-B-cell leukemia transcription factors (BPXs) function. Inhibits the binding of PBX1-HOX complex to DNA and blocks the transcriptional activity of E2A-PBX1. Tethers estrogen receptor-alpha (ESR1) to microtubules and allows them to influence estrogen receptors-alpha signaling.

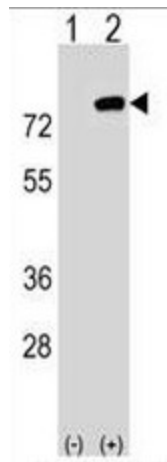
Synonyms: HPIP

Protein Families: Transcription Factors

Product images:



PBXIP1 Antibody (C-term) (Cat. #AP53185PU-N) western blot analysis in NCI-H292 cell line lysates (35ug/lane). This demonstrates the PBXIP1 antibody detected the PBXIP1 protein (arrow).



Western blot analysis of PBXIP1 (arrow) using rabbit polyclonal PBXIP1 Antibody (C-term) (Cat. #AP53185PU-N). 293 cell lysates (2 ug/lane) either nontransfected (Lane 1) or transiently transfected (Lane 2) with the PBXIP1 gene.