

Product datasheet for **AP53184PU-N**

PBX2 (Center) Rabbit Polyclonal Antibody

Product data:

Product Type:	Primary Antibodies
Applications:	WB
Recommended Dilution:	ELISA: 1/1000. Western Blot: 1/100 - 1/500.
Reactivity:	Human, Mouse
Host:	Rabbit
Isotype:	Ig
Clonality:	Polyclonal
Immunogen:	KLH conjugated synthetic peptide between 180-210 amino acids from the Central region of human PBX2
Specificity:	This antibody reacts to PBX2.
Formulation:	PBS State: Aff - Purified State: Liquid purified Ig fraction Preservative: 0.09% (W/V) sodium azide
Concentration:	lot specific
Purification:	Affinity chromatography on Protein A
Conjugation:	Unconjugated
Storage:	Store the antibody undiluted at 2-8°C for one month or (in aliquots) at -20°C for longer. Avoid repeated freezing and thawing.
Stability:	Shelf life: one year from despatch.
Predicted Protein Size:	45881 Da
Gene Name:	PBX homeobox 2
Database Link:	Entrez Gene 18515 Mouse Entrez Gene 5089 Human P40425



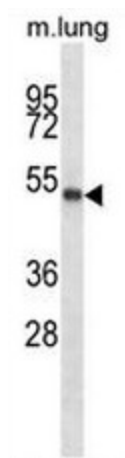
[View online »](#)

Background: This gene encodes a ubiquitously expressed member of the TALE/PBX homeobox family. It was identified by its similarity to a homeobox gene which is involved in t(1;19) translocation in acute pre-B-cell leukemias. This protein is a transcriptional activator which binds to the TLX1 promoter. The gene is located within the major histocompatibility complex (MHC) on chromosome 6. [provided by RefSeq].

Synonyms: Homeobox protein PBX2, G17

Protein Families: Transcription Factors

Product images:



PBX2 Antibody (Center) western blot analysis in mouse lung tissue lysates (35ug/lane). This demonstrates the PBX2 antibody detected the PBX2 protein (arrow).