

Product datasheet for **AP53181PU-N**

PAX7 (Center) Rabbit Polyclonal Antibody

Product data:

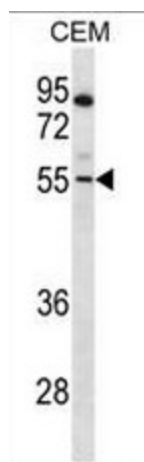
| | |
|-------------------------|---|
| Product Type: | Primary Antibodies |
| Applications: | WB |
| Recommended Dilution: | ELISA: 1/1000. Western Blot: 1/100 - 1/500. |
| Reactivity: | Human |
| Host: | Rabbit |
| Isotype: | Ig |
| Clonality: | Polyclonal |
| Immunogen: | KLH conjugated synthetic peptide between 180-210 amino acids from the Central region of human PAX |
| Specificity: | This antibody reacts to PAX7. |
| Formulation: | PBS State: Aff - Purified State: Liquid purified Ig fraction Preservative: 0.09% (W/V) sodium azide |
| Concentration: | lot specific |
| Purification: | Affinity chromatography on Protein A |
| Conjugation: | Unconjugated |
| Storage: | Store the antibody undiluted at 2-8°C for one month or (in aliquots) at -20°C for longer. Avoid repeated freezing and thawing. |
| Stability: | Shelf life: one year from despatch. |
| Predicted Protein Size: | 56896 Da |
| Gene Name: | paired box 7 |
| Database Link: | Entrez Gene 5081 Human P23759 |
| Synonyms: | Pax-7, HUP1 |



[View online »](#)

Protein Families: Adult stem cells, Druggable Genome, Embryonic stem cells, ES Cell Differentiation/IPS, Transcription Factors

Product images:



PAX7 Antibody (Center) western blot analysis in CEM cell line lysates (35ug/lane). This demonstrates the PAX7 antibody detected the PAX7 protein (arrow).