

## Product datasheet for **AP53178PU-N**

### **PAX1 (N-term) Rabbit Polyclonal Antibody**

#### **Product data:**

Product Type:	Primary Antibodies
Applications:	WB
Recommended Dilution:	<b>ELISA:</b> 1/1000. <b>Western Blot:</b> 1/100 - 1/500.
Reactivity:	Human
Host:	Rabbit
Isotype:	Ig
Clonality:	Polyclonal
Immunogen:	KLH conjugated synthetic peptide between 76-103 amino acids from the N-terminal region of human PAX1
Specificity:	This antibody reacts to PAX1.
Formulation:	PBS State: Aff - Purified State: Liquid purified Ig fraction Preservative: 0.09% (W/V) sodium azide
Concentration:	lot specific
Purification:	Affinity chromatography on Protein A
Conjugation:	Unconjugated
Storage:	Store the antibody undiluted at 2-8°C for one month or (in aliquots) at -20°C for longer. Avoid repeated freezing and thawing.
Stability:	Shelf life: one year from despatch.
Predicted Protein Size:	55499 Da
Gene Name:	paired box 1
Database Link:	<a href="#">Entrez Gene 5075 Human P15863</a>

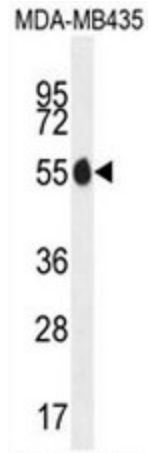


[View online »](#)

**Background:** The PAX genes, including PAX1, are a highly conserved family of developmental control genes that encode transcription factors and have been shown to play a role in pattern formation during embryogenesis in vertebrates (McGaughran et al., 2003 [PubMed 12774041]). See PAX7 (MIM 167410) for a discussion of paired box domain genes.

**Synonyms:** Pax-1, HUP48

**Product images:**



PAX1 Antibody (N-term) western blot analysis in MDA-MB435 cell line lysates (35ug/lane). This demonstrates the PAX1 antibody detected the PAX1 protein (arrow).