

Product datasheet for **AP53173PU-N**

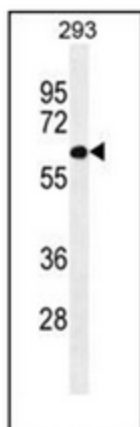
PATL2 (Center) Rabbit Polyclonal Antibody

Product data:

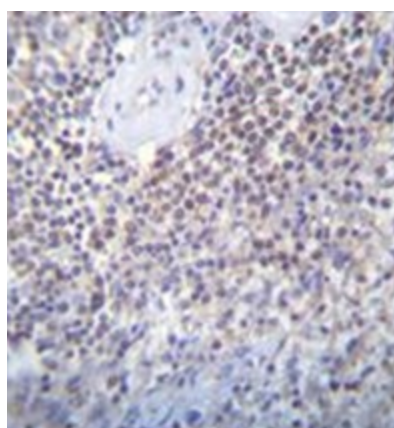
Product Type:	Primary Antibodies
Applications:	IF, IHC, WB
Recommended Dilution:	ELISA: 1/1000. Western Blot: 1/1000. Immunofluorescence: 1/10-1/50. Immunohistochemistry on Paraffin Sections: 1/10-1/50.
Reactivity:	Human
Host:	Rabbit
Isotype:	Ig
Clonality:	Polyclonal
Immunogen:	KLH conjugated synthetic peptide between 168-196 amino acids from the Central region of Human PATL2
Specificity:	This antibody recognizes Human PATL2 (Center). Other species not tested.
Formulation:	PBS containing 0.09% (W/V) Sodium Azide as preservative State: Aff - Purified State: Liquid purified Ig fraction
Concentration:	lot specific
Purification:	Protein A column, followed by peptide affinity purification
Conjugation:	Unconjugated
Storage:	Store undiluted at 2-8°C for one month or (in aliquots) at -20°C for longer. Avoid repeated freezing and thawing.
Stability:	Shelf life: one year from despatch.
Gene Name:	PAT1 homolog 2
Database Link:	Entrez Gene 197135 Human C9JE40
Synonyms:	Protein PAT1 homolog 2 PAT1-like protein 2, Protein PAT1 homolog a, Pat1a, hPat1a
Note:	Molecular Weight: 61;464 Da



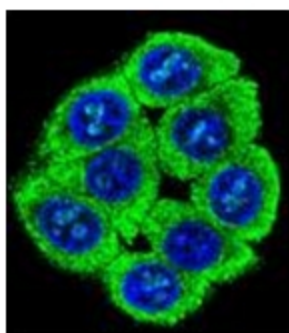
[View online »](#)

Product images:

Western blot analysis of PATL2 Antibody (Center) in 293 cell line lysates (35ug/lane). This demonstrates the PATL2 antibody detected the PATL2 protein (arrow).



Immunohistochemistry analysis in formalin fixed and paraffin embedded human spleen tissue reacted with PATL2 Antibody (Center), which was peroxidase conjugated to the secondary antibody and followed by DAB staining. This data demonstrates the use of PATL2 Antibody (Center) for immunohistochemistry. Clinical relevance has not been evaluated.



Confocal immunofluorescent analysis of PATL2 Antibody (Center) with 293 cell followed by Alexa Fluor 488-conjugated goat anti-rabbit IgG (green). DAPI was used to stain the cell nuclear (blue)