

Product datasheet for **AP53172PU-N**

PATL1 (C-term) Rabbit Polyclonal Antibody

Product data:

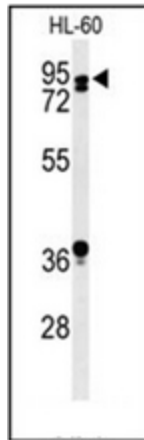
Product Type:	Primary Antibodies
Applications:	FC, IHC, WB
Recommended Dilution:	ELISA: 1/1000. Western Blot: 1/100-1/500. Flow Cytometry: 1/10-1/50. Immunohistochemistry on Paraffin Sections: 1/50-1/100.
Reactivity:	Human
Host:	Rabbit
Isotype:	Ig
Clonality:	Polyclonal
Immunogen:	KLH conjugated synthetic peptide between 496~526 amino acids from the C-terminal region of human PATL1
Specificity:	This antibody recognizes Human PATL1 (C-term).
Formulation:	PBS containing 0.09% (W/V) Sodium Azide as preservative State: Aff - Purified State: Liquid purified Ig fraction
Concentration:	lot specific
Purification:	Protein A column, followed by peptide affinity purification
Conjugation:	Unconjugated
Storage:	Store undiluted at 2-8°C for one month or (in aliquots) at -20°C for longer. Avoid repeated freezing and thawing.
Stability:	Shelf life: one year from despatch.
Gene Name:	PAT1 homolog 1, processing body mRNA decay factor
Database Link:	Entrez Gene 219988 Human Q86TB9
Synonyms:	PAT1-like protein 1, Protein PAT1 homolog 1,OK/KNS-cl.5
Note:	Molecular Weight: 86850 Da



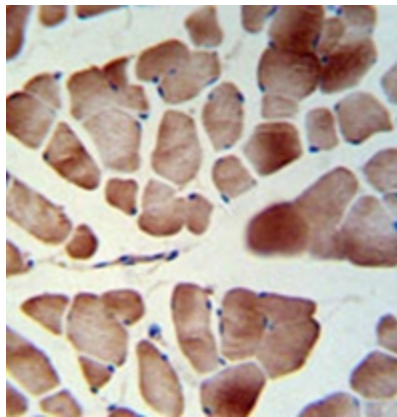
[View online »](#)

Protein Pathways: RNA degradation

Product images:

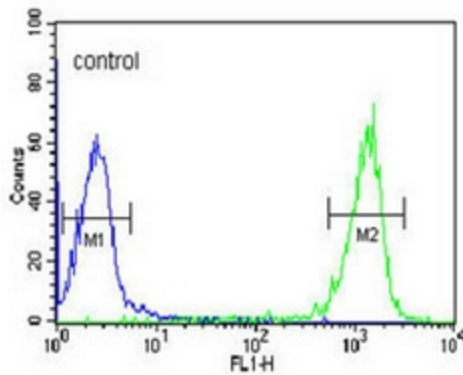


Western blot analysis of PATL1 Antibody (C-term) in HL-60 cell line lysates (35ug/lane). PATL1 (arrow) was detected using the purified Pab.



Immunohistochemistry analysis in formalin fixed and paraffin embedded skeletal muscle reacted with PATL1 Antibody (C-term), which was peroxidase conjugated to the secondary antibody and followed by DAB staining. This data demonstrates the use of the PATL1 Antibody (C-term) for immunohistochemistry. Clinical relevance has not been evaluated.

HL-60



Flow cytometric analysis of HL-60 cells using PATL1 Antibody (C-term) (right histogram) compared to a negative control cell (left histogram). FITC-conjugated goat-anti-rabbit secondary antibodies were used for the analysis.