

Product datasheet for **AP53168PU-N**

Parp9 (C-term) Rabbit Polyclonal Antibody

Product data:

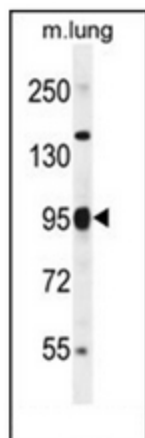
Product Type:	Primary Antibodies
Applications:	IHC, WB
Recommended Dilution:	ELISA: 1/1000. Western Blot: 1/1000. Immunohistochemistry on Paraffin Sections: 1/50-1/100.
Reactivity:	Mouse, Human
Host:	Rabbit
Isotype:	Ig
Clonality:	Polyclonal
Immunogen:	KLH conjugated synthetic peptide between 599-629 amino acids from the C-terminal region of Human Parp9.
Specificity:	This antibody recognizes Human and Mouse PARP9 (C-term).
Formulation:	PBS containing 0.09% (W/V) Sodium Azide as preservative State: Aff - Purified State: Liquid purified Ig fraction
Concentration:	lot specific
Purification:	Protein A column, followed by peptide affinity purification
Conjugation:	Unconjugated
Storage:	Store undiluted at 2-8°C for one month or (in aliquots) at -20°C for longer. Avoid repeated freezing and thawing.
Stability:	Shelf life: one year from despatch.
Gene Name:	poly (ADP-ribose) polymerase family, member 9
Database Link:	Entrez Gene 80285 Mouse Q8CAS9
Background:	PARP9 is a novel risk related gene that is expressed at higher levels in fatal high risk diffuse large B cell lymphomas.
Synonyms:	PARP-9, BAL



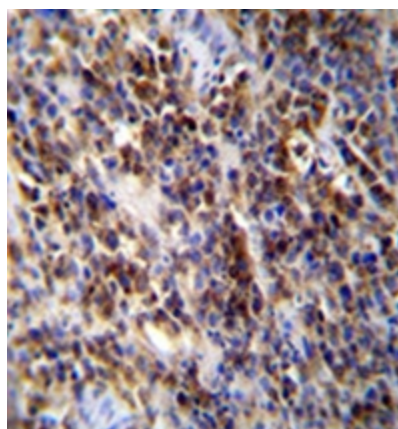
[View online »](#)

Note: **Molecular Weight:** 96659 Da

Product images:



Western blot analysis of PAPR9 Antibody (C-term) in mouse lung tissue lysates (35ug/lane). This demonstrates the Parp9 antibody detected the Parp9 protein (arrow).



Immunohistochemistry analysis in formalin fixed and paraffin embedded human lymphoma reacted with PAPR9 Antibody (C-term), which was peroxidase conjugated to the secondary antibody followed by DAB staining. This data demonstrates the use of Parp9 Antibody (C-term) for immunohistochemistry. Clinical relevance has not been evaluated.