

## Product datasheet for **AP53165PU-N**

### **Parp2 (N-term) Rabbit Polyclonal Antibody**

#### **Product data:**

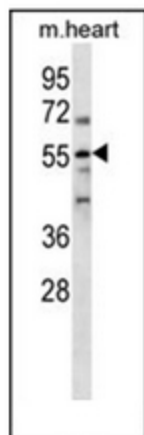
Product Type:	Primary Antibodies
Applications:	WB
Recommended Dilution:	<b>ELISA:</b> 1/1000. <b>Western Blot:</b> 1/100-1/500.
Reactivity:	Human, Mouse
Host:	Rabbit
Isotype:	Ig
Clonality:	Polyclonal
Immunogen:	KLH conjugated synthetic peptide between 9-41 amino acids from the N-terminal region of human PARP2
Specificity:	This antibody recognizes Human and Mouse PARP2 (N-term).
Formulation:	PBS containing 0.09% (W/V) Sodium Azide as preservative State: Aff - Purified State: Liquid purified Ig fraction
Concentration:	lot specific
Purification:	Protein A column, followed by peptide affinity purification
Conjugation:	Unconjugated
Storage:	Store undiluted at 2-8°C for one month or (in aliquots) at -20°C for longer. Avoid repeated freezing and thawing.
Stability:	Shelf life: one year from despatch.
Gene Name:	poly (ADP-ribose) polymerase family, member 2
Database Link:	<a href="#">Entrez Gene 10038 Human</a> <a href="#">Entrez Gene 11546 Mouse</a> <a href="#">O88554</a>
Background:	PARP2 is involved in the base excision repair (BER) pathway, by catalyzing the poly(ADP-ribose)ation of a limited number of acceptor proteins involved in chromatin architecture and in DNA metabolism. This modification follows DNA damages and appears as an obligatory step in a detection/signaling pathway leading to the reparation of DNA strand breaks.
Synonyms:	PARP-2, ADPRT2, ADPRTL2, Poly [ADP-ribose] polymerase 2, PARP 2, EC=2.4.2.30, pADPRT-2



[View online »](#)

Note: **Molecular Weight:** 63397 Da

### Product images:



Western blot analysis of PARP2 Antibody (N-term) in mouse heart tissue lysates (35ug/lane). This demonstrates the PARP2 antibody detected the PARP2 protein (arrow).