

Product datasheet for **AP53164PU-N**

Parp2 (C-term) Rabbit Polyclonal Antibody

Product data:

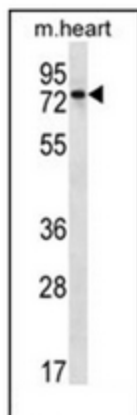
Product Type:	Primary Antibodies
Applications:	WB
Recommended Dilution:	ELISA: 1/1000. Western Blot: 1/100-1/500.
Reactivity:	Human, Mouse
Host:	Rabbit
Isotype:	Ig
Clonality:	Polyclonal
Immunogen:	KLH conjugated synthetic peptide between 313-344 amino acids from the C-terminal region of Human PARP2
Specificity:	This antibody recognizes Human and Mouse PARP2 (C-term).
Formulation:	PBS containing 0.09% (W/V) Sodium Azide as preservative State: Purified State: Liquid purified Ig fraction
Concentration:	lot specific
Purification:	Saturated Ammonium Sulfate (SAS) precipitation followed by dialysis against PBS
Conjugation:	Unconjugated
Storage:	Store undiluted at 2-8°C for one month or (in aliquots) at -20°C for longer. Avoid repeated freezing and thawing.
Stability:	Shelf life: one year from despatch.
Gene Name:	poly (ADP-ribose) polymerase family, member 2
Database Link:	Entrez Gene 10038 Human Entrez Gene 11546 Mouse O88554
Background:	Parp2 is involved in the base excision repair (BER) pathway, by catalyzing the poly(ADP-ribose)ation of a limited number of acceptor proteins involved in chromatin architecture and in DNA metabolism. This modification follows DNA damages and appears as an obligatory step in a detection/signaling pathway leading to the reparation of DNA strand breaks.
Synonyms:	PARP-2, ADPRT2, ADPRTL2, Poly [ADP-ribose] polymerase 2, PARP 2, EC=2.4.2.30, pADPRT-2



[View online »](#)

Note: **Molecular Weight:** 63397 Da

Product images:



Western blot analysis of PARP2 Antibody (C-term) in mouse heart tissue lysates (35ug/lane). This demonstrates the PARP2 antibody detected the PARP2 protein (arrow).