

Product datasheet for **AP53163PU-N**

BPHL (C-term) Rabbit Polyclonal Antibody

Product data:

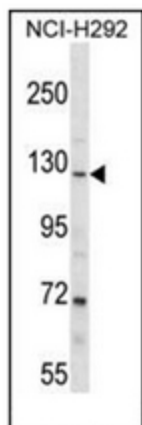
Product Type:	Primary Antibodies
Applications:	WB
Recommended Dilution:	ELISA: 1/1000. Western Blot: 1/100-1/500.
Reactivity:	Human
Host:	Rabbit
Isotype:	Ig
Clonality:	Polyclonal
Immunogen:	KLH conjugated synthetic peptide between 820-849 amino acids from the C-terminal region of human PARG
Specificity:	This antibody recognizes Human PARG (C-term).
Formulation:	PBS containing 0.09% (W/V) Sodium Azide as preservative State: Aff - Purified State: Liquid purified Ig fraction
Concentration:	lot specific
Purification:	Protein A column, followed by peptide affinity purification
Conjugation:	Unconjugated
Storage:	Store undiluted at 2-8°C for one month or (in aliquots) at -20°C for longer. Avoid repeated freezing and thawing.
Stability:	Shelf life: one year from despatch.
Gene Name:	biphenyl hydrolase-like (serine hydrolase)
Database Link:	Entrez Gene 8505 Human Entrez Gene 670 Human Q86WA6
Background:	Poly(ADP-ribose) glycohydrolase (PARG) is the major enzyme responsible for the catabolism of poly(ADP-ribose), a reversible covalent-modifier of chromosomal proteins. The protein is found in many tissues and may be subject to proteolysis generating smaller, active products.
Synonyms:	PARG99, Poly(ADP-ribose) glycohydrolase



[View online »](#)

Note: **Molecular Weight:** 111110 Da

Product images:



Western blot analysis of PARG Antibody (C-term) in NCI-H292 cell line lysates (35ug/lane). This demonstrates the PARG antibody detected the PARG protein (arrow).