

Product datasheet for **AP53162PU-N**

Progesterin Receptor Beta (PAQR8) (C-term) Rabbit Polyclonal Antibody

Product data:

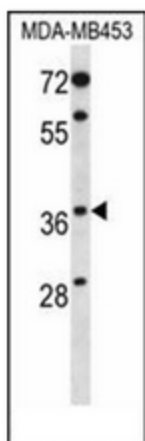
Product Type:	Primary Antibodies
Applications:	WB
Recommended Dilution:	ELISA: 1/1000. Western Blot: 1/100-1/500.
Reactivity:	Human, Mouse
Host:	Rabbit
Isotype:	Ig
Clonality:	Polyclonal
Immunogen:	KLH conjugated synthetic peptide between 325-354 amino acids from the C-terminal region of human PAQR8
Specificity:	This antibody recognizes Human and Mouse PAQR8 (C-term).
Formulation:	PBS containing 0.09% (W/V) Sodium Azide as preservative State: Aff - Purified State: Liquid purified Ig fraction
Concentration:	lot specific
Purification:	Protein A column, followed by peptide affinity purification
Conjugation:	Unconjugated
Storage:	Store undiluted at 2-8°C for one month or (in aliquots) at -20°C for longer. Avoid repeated freezing and thawing.
Stability:	Shelf life: one year from despatch.
Gene Name:	progesterin and adipoQ receptor family member 8
Database Link:	Entrez Gene 74229 Mouse Entrez Gene 85315 Human Q8TEZ7
Background:	PAQR7 is a steroid membrane receptor. Binds progesterone in vitro. It may be involved in oocyte maturation.
Synonyms:	mPR beta, Membrane progesterin receptor beta, C6orf33, LMPB1, MPRB
Note:	Molecular Weight: 40464 Da



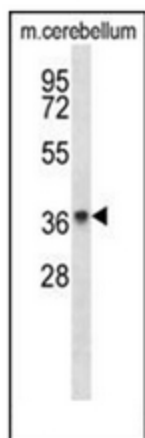
[View online »](#)

Protein Families: Druggable Genome, Transmembrane

Product images:



Western blot analysis of PAQR8 Antibody (C-term) in MDA-MB453 cell line lysates (35ug/lane). This demonstrates the PAQR8 antibody detected the PAQR8 protein (arrow).



Western blot analysis of PAQR8 Antibody (C-term) in mouse cerebellum tissue lysates (35ug/lane). This demonstrates the PAQR8 antibody detected the PAQR8 protein (arrow).