

## Product datasheet for **AP53159PU-N**

### PAPOLA (Center) Rabbit Polyclonal Antibody

#### Product data:

Product Type:	Primary Antibodies
Applications:	IHC, WB
Recommended Dilution:	<b>ELISA:</b> 1/1000. <b>Western Blot:</b> 1/100-1/500. <b>Immunohistochemistry on Paraffin Sections:</b> 1/50-1/100.
Reactivity:	Human
Host:	Rabbit
Isotype:	Ig
Clonality:	Polyclonal
Immunogen:	KLH conjugated synthetic peptide between 414-443 amino acids from the Central region of human PAPOLA
Specificity:	This antibody recognizes Human PAPOLA (Center).
Formulation:	PBS containing 0.09% (W/V) Sodium Azide as preservative State: Aff - Purified State: Liquid purified Ig fraction
Concentration:	lot specific
Purification:	Protein A column, followed by peptide affinity purification
Conjugation:	Unconjugated
Storage:	Store undiluted at 2-8°C for one month or (in aliquots) at -20°C for longer. Avoid repeated freezing and thawing.
Stability:	Shelf life: one year from despatch.
Gene Name:	poly(A) polymerase alpha
Database Link:	<a href="#">Entrez Gene 10914 Human P51003</a>
Background:	Polymerase that creates the 3'-poly(A) tail of mRNA's. Also required for the endoribonucleolytic cleavage reaction at some polyadenylation sites. May acquire specificity through interaction with a cleavage and polyadenylation specificity factor (CPSF) at its C-terminus.



[View online »](#)

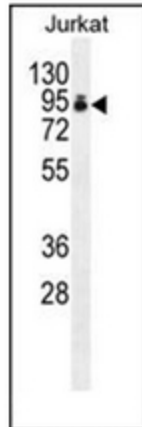
Synonyms: PAP-alpha

Note: **Molecular Weight:** 82843 Da

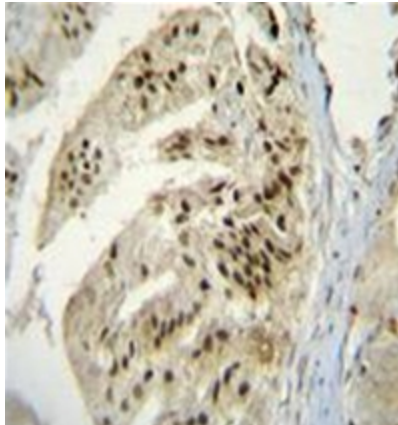
Protein Families: Transcription Factors

Protein Pathways: RNA degradation

### Product images:



Western blot analysis of PAP Antibody (Center) in Jurkat cell line lysates (35ug/lane). This demonstrates the PAP antibody detected the PAP protein (arrow).



Immunohistochemistry analysis in formalin fixed and paraffin embedded human prostate carcinoma reacted with, which was peroxidase conjugated to the secondary antibody and followed by DAB staining. This data demonstrates the use of PAP Antibody (Center) for immunohistochemistry. Clinical relevance has not been evaluated.