

Product datasheet for **AP53158PU-N**

Pannexin 3 (PANX3) (N-term) Rabbit Polyclonal Antibody

Product data:

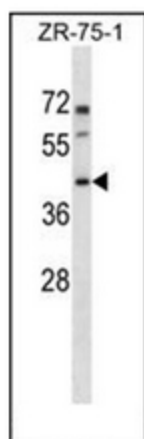
Product Type:	Primary Antibodies
Applications:	WB
Recommended Dilution:	ELISA: 1/1000. Western Blot: 1/100-1/500.
Reactivity:	Human
Host:	Rabbit
Isotype:	Ig
Clonality:	Polyclonal
Immunogen:	KLH conjugated synthetic peptide between 2-31 amino acids from the N-terminal region of Human PANX3
Specificity:	This antibody recognizes Human PANX3 (N-term).
Formulation:	PBS containing 0.09% (W/V) Sodium Azide as preservative State: Aff - Purified State: Liquid purified Ig fraction
Concentration:	lot specific
Purification:	Protein A column, followed by peptide affinity purification
Conjugation:	Unconjugated
Storage:	Store undiluted at 2-8°C for one month or (in aliquots) at -20°C for longer. Avoid repeated freezing and thawing.
Stability:	Shelf life: one year from despatch.
Gene Name:	pannexin 3
Database Link:	Entrez Gene 116337 Human Q96QZ0
Background:	The protein encoded by this gene belongs to the innexin family. Innexin family members are known to be the structural components of gap junctions.
Synonyms:	Pannexin-3, Pannexin 3, PX3
Note:	Molecular Weight: 44683 Da



[View online »](#)

Protein Families: Transmembrane

Product images:



Western blot analysis of PANX3 Antibody (N-term) in ZR-75-1 cell line lysates (35ug/lane). This demonstrates the PANX3 antibody detected the PANX3 protein (arrow).