

Product datasheet for **AP53157PU-N**

PAN2 (C-term) Rabbit Polyclonal Antibody

Product data:

Product Type:	Primary Antibodies
Applications:	WB
Recommended Dilution:	ELISA: 1/1000. Western Blot: 1/100-1/500.
Reactivity:	Human
Host:	Rabbit
Isotype:	Ig
Clonality:	Polyclonal
Immunogen:	KLH conjugated synthetic peptide between 859-888 amino acids from the C-terminal region of human USP52 / PAN2
Specificity:	This antibody recognizes Human USP52 / PAN2 (C-term).
Formulation:	PBS containing 0.09% (W/V) Sodium Azide as preservative State: Aff - Purified State: Liquid purified Ig fraction
Concentration:	lot specific
Purification:	Protein A column, followed by peptide affinity purification
Conjugation:	Unconjugated
Storage:	Store undiluted at 2-8°C for one month or (in aliquots) at -20°C for longer. Avoid repeated freezing and thawing.
Stability:	Shelf life: one year from despatch.
Gene Name:	PAN2 poly(A) specific ribonuclease subunit
Database Link:	Entrez Gene 9924 Human Q504Q3
Background:	This gene encodes a deadenylase that functions as the catalytic subunit of the polyadenylate binding protein dependent poly(A) nuclease complex. The encoded protein is a magnesium dependent 3' to 5' exoribonuclease that is involved in the degradation of cytoplasmic mRNAs. Alternate splicing results in multiple transcript variants.
Synonyms:	Inactive ubiquitin carboxyl-terminal hydrolase 52, KIAA0710

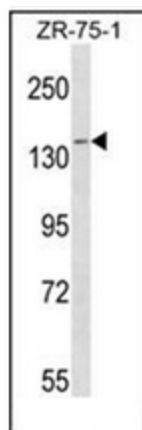


[View online »](#)

Note: **Molecular Weight:** 135368 Da

Protein Families: Protease

Product images:



Western blot analysis of USP52 / PAN2 Antibody (C-term) - in ZR-75-1 cell line lysates (35ug/lane). This demonstrates the PAN2 antibody detected the PAN2 protein (arrow)