

## Product datasheet for **AP53156PU-N**

### **PALM3 (C-term) Rabbit Polyclonal Antibody**

#### **Product data:**

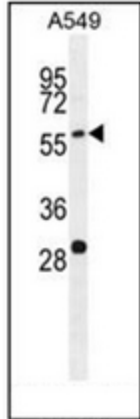
Product Type:	Primary Antibodies
Applications:	FC, IHC, WB
Recommended Dilution:	<b>ELISA:</b> 1/1000. <b>Western Blot:</b> 1/100-1/500. <b>Flow Cytometry:</b> 1/10-1/50. <b>Immunohistochemistry on Paraffin Sections:</b> 1/10-1/50.
Reactivity:	Human
Host:	Rabbit
Isotype:	Ig
Clonality:	Polyclonal
Immunogen:	KLH conjugated synthetic peptide between 553-582 amino acids from the C-terminal region of human PALM3
Specificity:	This antibody recognizes Human PALM3 (C-term).
Formulation:	PBS containing 0.09% (W/V) Sodium Azide as preservative State: Aff - Purified State: Liquid purified Ig fraction
Concentration:	lot specific
Purification:	Protein A column, followed by peptide affinity purification
Conjugation:	Unconjugated
Storage:	Store undiluted at 2-8°C for one month or (in aliquots) at -20°C for longer. Avoid repeated freezing and thawing.
Stability:	Shelf life: one year from despatch.
Gene Name:	paralemmin 3
Database Link:	<a href="#">Entrez Gene 342979 Human A6NDB9</a>
Background:	PALM3 is a ATP-binding protein (By similarity).
Synonyms:	PALM3



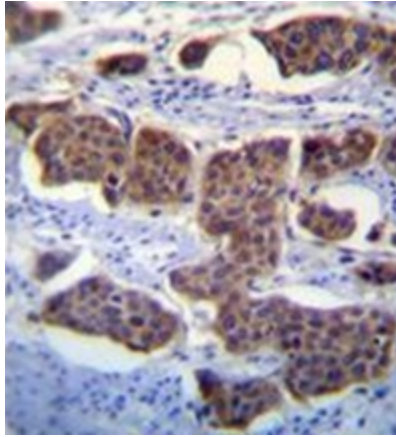
[View online »](#)

Note: **Molecular Weight:** 71695 Da

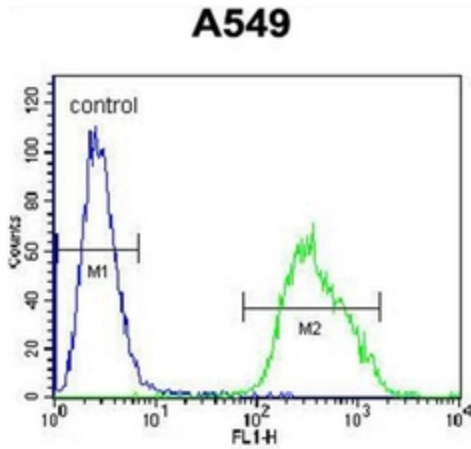
**Product images:**



Western blot analysis of PALM3 Antibody (C-term) in A549 cell line lysates (35ug/lane). This demonstrates the PALM3 antibody detected the PALM3 protein (arrow).



Immunohistochemistry analysis in formalin fixed and paraffin embedded human bladder carcinoma reacted with PALM3 Antibody (C-term) followed by peroxidase conjugation of the secondary antibody and DAB staining. This data demonstrates the use of PALM3 Antibody (C-term) for immunohistochemistry. Clinical relevance has not been evaluated.



Flow cytometric analysis of A549 cells using PALM3 Antibody (C-term) (right histogram) compared to a negative control cell (left histogram). FITC-conjugated goat-anti-rabbit secondary antibodies were used for the analysis.