

Product datasheet for **AP53153PU-N**

PAIP2 (N-term) Rabbit Polyclonal Antibody

Product data:

Product Type:	Primary Antibodies
Applications:	WB
Recommended Dilution:	ELISA: 1/1000. Western Blot: 1/100-1/500.
Reactivity:	Human
Host:	Rabbit
Isotype:	Ig
Clonality:	Polyclonal
Immunogen:	KLH conjugated synthetic peptide between 6-34 amino acids from the N-terminal region of human PAIP2
Specificity:	This antibody recognizes Human PAIP2 (N-term).
Formulation:	PBS containing 0.09% (W/V) Sodium Azide as preservative State: Aff - Purified State: Liquid purified Ig fraction
Concentration:	lot specific
Purification:	Protein A column, followed by peptide affinity purification
Conjugation:	Unconjugated
Storage:	Store undiluted at 2-8°C for one month or (in aliquots) at -20°C for longer. Avoid repeated freezing and thawing.
Stability:	Shelf life: one year from despatch.
Gene Name:	poly(A) binding protein interacting protein 2
Database Link:	Entrez Gene 51247 Human Q9BPZ3
Background:	PAIP2 acts as a repressor in the regulation of translation initiation of poly(A)-containing mRNAs. Its inhibitory activity on translation is mediated via its action on PABPC1. Displaces the interaction of PABPC1 with poly(A) RNA and competes with PAIP1 for binding to PABPC1. Its association with PABPC1 results in disruption of the cytoplasmic poly(A) RNP structure organization.

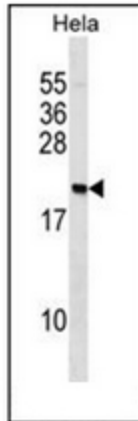


[View online »](#)

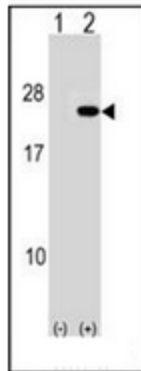
Synonyms: PAIP-2, PAIP2A, PABP-interacting protein 2

Note: **Molecular Weight:** 14984 Da

Product images:



Western blot analysis of PAIP2 Antibody (N-term) in HeLa cell line lysates (35ug/lane). This demonstrates the PAIP2 antibody detected the PAIP2 protein (arrow).



Western blot analysis of PAIP2 (arrow) using PAIP2 Antibody (N-term). 293 cell lysates (2 ug/lane) either nontransfected (Lane 1) or transiently transfected (Lane 2) with the PAIP2 gene.